


ATT INOX DRAIN
Stainless Steel Engineering

www.attinox.com
www.models.att.eu

20+ years of experience



Mini-Catalog

In Association with

DRAINS
UNLIMITED 

www.drains-unlimited.com | 1 (833) 837-2467

International



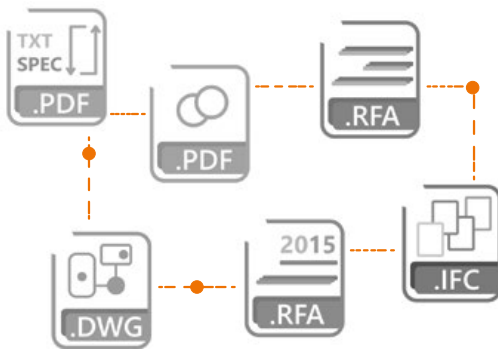
ATT Sp. z o. o.
ul. Albatrosów 16C,
30-716 Kraków, Poland
tel. +48 12 290 29 30
e-mail: att@att.eu
www.att.eu
www.attinox.com

North America - USA & Canada

In Association with



Drains Unlimited, Inc.
110 Post Road,
Darien, CT 06820, USA
tel. +1 (833) 837-2467
email: sales@drains-unlimged.com
www.drains-unlimited.com



ATT BIM Library



Business Card

ATT

TABLE OF CONTENTS

2	ABOUT THE COMPANY
5	CHEMICAL RESISTANCE TABLE
7	FLOOR DRAINS
19	TRENCH DRAINS
29	KITCHEN CHANNEL DRAINS
34	SLOT DRAINS
38	ROOF DRAINS
41	SHOWER DRAINS
42	MANHOLE COVERS
48	PROTECTIVE ELEMENTS
50	PLATFORMS & STRUCTURES
52	FOOD PROCESING
53	HYGIENE & SAFETY

ABOUT THE COMPANY



ATT is a manufacturing and trading company offering stainless steel elements. We employ highly qualified personnel and operate a technologically advanced machine park. This allows us to comprehensively implement entrusted tasks – from technical consultancy in the design phase and through the production process to assembly.

ATT is a team of engineers with extensive knowledge and passion combined with imagination and long-term experience. This combination of elements is reflected in the projects we develop and implement. Our comprehensive technical know-how corresponding to the realities in the construction industry and industrial facilities means we can optimally tailor solutions to meet the needs of individual customers.

The commercial division is made up of sales engineers who participate in the entire process.

Applications:

- Food & Beverage Processing
- Dairy
- Breweries/ Distilleries
- Chemical
- Pharmaceutical
- Industrial Manufacturing
- Commercial Kitchens
- Garages/ Parking Lots
- Stadiums
- Residential
- Health Care
- Hospitality
- Assisted Living
- Restaurants
- Landscaping

They are present at each phase of implementation of an order: during the preparation of projects, production, assembly, and installation works, acting as technical advisers.

The scope of ATT's operations is not limited to Poland or European countries. Our goods and services are used by companies from the United States, the United Arab Emirates, South Korea, and Australia, to name a few.

We prepare elements of equipment and installation systems for facilities of the food, gastronomic, chemical, and pharmaceutical industries. The majority of our products can be found on our website at www.att.eu, and available in several language versions.

Our Products are also available in the United States and Canada through our partnership with Drains Unlimited Inc. on their website at www.drains-unlimited.com.

STAINLESS STEEL



STEEL PROPERTIES

The term "stainless steel" refers to grades of raw materials with increased resistance to corrosion when compared to normal alloy steels.

Stainless steels are iron alloys that contain a minimum of 11% chrome. They owe their high anti-corrosion properties to the production of a top layer of chromium oxides.

This layer is characterized by high durability. Even in cases of mechanical or chemical damage to the steel surface, the anti-corrosive properties of the material are maintained.

LOAD CLASS

- Medium Duty: (Load Class-A) = 3,372lbs, 15kn (40-70psi)
- Heavy Duty: (Load Class-B) = 28,100lbs, 125kn (369-581psi)
- Super Duty: (Load Class-C) = 56,200lbs, 250kn (719-1,160psi)
- Extra Duty: (Load Class-D) = 89,920lbs, 400kn (1,182-1,856psi)
- Extreme Duty: (Load Class-E) = 134,800lbs, 600kn (1,773-2,785psi)
- Special Duty: (Load Class-F) = 202,320lbs, 900kn (2,639-4,177psi)

STAINLESS STEEL TYPES

Austenitic - it features very good anti-corrosion properties and is used in the food, chemical, and pharmaceutical industries - carbon content 0.02%.

Martensitic - it features the highest mechanical durability among all groups of steel and magnetic properties; it is subject to heat treatment and is characterized by a high carbon content of approximately 0.3%.

Austenitic-Ferritic - melted in a duplex process, it features good anti-corrosion properties and high resistance to cracking. It is a magnetic steel, unsuitable for installation elements.



STAINLESS STEEL

PRODUCTION MATERIAL

The following steels are the basic production materials: AISI 304, EN 1.4301 and AISI 316L, EN 1.4404. In case of necessity to produce elements using steels of other grades, the company manufactures these elements upon the Client's request. In case of decorative products (interior design), there is a possibility to order elements made of ground sheets or perform grinding after treatment.

STAINLESS STEEL CHEMICAL RESISTANCE

The following information was prepared based on our knowledge and long-term experience in treatment of stainless steel. The results of analysis are not considered standards.

Resistance of the material to a given factor may only be guaranteed by laboratory tests confirming the chemical resistance to a given medium.

TABLE OF CHEMICAL RESISTANCE OF MATERIALS

Chemical	Temp. C°	STEEL 1.4301 304	STEEL 1.4404 316L
acetone	20	< 0,1	< 0,1
methyl alcohol	20	< 0,1	< 0,1
alcohol propyl	20	< 0,1	< 0,1
ammonia - gas (dry)	20	< 0,1	< 0,1
ammonia	boiling p.	< 0,1	< 0,1
aniline	20	< 0,1	< 0,1
ammonium nitrate	20	< 0,1	< 0,1
copper nitrate	20	< 0,1	< 0,1
silver nitrate	20	< 0,1	< 0,1
benzene	20	< 0,1	< 0,1
petroleum oils	20	< 0,1	< 0,1
tan liquor	20	< 0,1	< 0,1
butane	20	< 0,1	< 0,1
chlorine (wet)	20	> 1	> 1
chlorine (dry)	100% 70	< 0,1	< 0,1
ammonium chloride	20	0,1 - 1	0,1 - 1
ammonium chloride	20% boiling p.	0,1 - 1 SP	< 0,1 SP
ammonium chloride	43% boiling p.	< 0,1 SP	< 0,1 SP
amyl chloride	20	< 0,1	< 0,1
barium chloride	20	< 0,1	< 0,1
zinc chloride	20	0,1 - 1	0,1 - 1
tin chloride	20	> 1	< 0,1
ethyl chloride (chloroethane)	20	< 0,1	< 0,1
aluminum chloride	20	0,1 - 1	0,1 - 1
magnesium chloride	20	> 1	> 1
methyl chloride	20	< 0,1	< 0,1
cupric chloride	20	> 1	> 1
nickel chloride	20	> 1	> 1
potassium chloride	20	< 0,1	< 0,1
sodium chloride	3% 20-60	0,1 - 1 P	< 0,1 P
calcium chloride	20	> 1	0,1 - 1
calcium chloride	20%	< 0,1 P	< 0,1 P
calcium chloride	20% boiling p.	0,1 - 1 SP	< 0,1 P
chlorobenzene	20	< 0,1	< 0,1
chloroform	20	0,1 - 1	0,1 - 1
cupric cyanide	20	< 0,1	< 0,1
potassium cyanide	20	< 0,1	< 0,1
sodium cyanide	20	< 0,1	< 0,1
cyclohexane	20	< 0,1	< 0,1
cyclohexanone	20	< 0,1	< 0,1
carbon tetrachloride	20	< 0,1	< 0,1
diethylamine	20	< 0,1	< 0,1
dimethylaniline	20	< 0,1	< 0,1
bichloride of potassium	20	< 0,1	< 0,1
sodium disulphide	20	< 0,1	< 0,1
carbon disulphide	20	< 0,1	< 0,1
sulfur dioxide (dry)	20	> 1	< 0,1
sulfur dioxide (wet)	20	x	< 0,1
carbon dioxide	20	< 0,1	< 0,1
sodium bicarbonate	20	< 0,1	< 0,1
phenol	5% 20	< 0,1	< 0,1

Chemical	Temp. C°	STEEL 1.4301 304	STEEL 1.4404 316L
formaldehyde	37%	20	< 0,1
ammonium phosphate	20	0,1 - 1	> 1
disodium phosphate	20	x	x
trisodium phosphate	20	< 0,1	< 0,1
freon 12	20	< 0,1	< 0,1
furfural	20	< 0,1	< 0,1
fluorine gas (wet)	20	> 1	> 1
propane gas	20	< 0,1	< 0,1
glycerine	20	< 0,1	< 0,1
ethylene glycol	20	< 0,1	< 0,1
glucose	20	< 0,1	< 0,1
hydroquinone	20	< 0,1	< 0,1
iodine	20	> 1	> 1
methyl ethyl ketone	20	< 0,1	< 0,1
xylene	20	< 0,1	< 0,1
nitric acid	30% boiling p.	< 0,1	< 0,1
nitric acid	50% boiling p.	0,1 - 1	0,1 - 1
nitric acid	65% 80	< 0,1	< 0,1
nitric acid	65% boiling p.	0,1 - 1	0,1 - 1
benzoic acid	20	< 0,1	< 0,1
boric acid	20	< 0,1	< 0,1
hydrobromic acid	20%	20	> 1
bromic acid	20	0,1 - 1	0,1 - 1
chloroacetic acid	20	0,1 - 1	0,1 - 1
chromic acid	50%	20	> 1
chromic acid	10%	20	< 0,1
citric acid	25% boiling p.	> 1	< 0,1
citric acid	50%	20	< 0,1
phosphoric acid	20% boiling p.	< 0,1	< 0,1
phosphoric acid	40% boiling p.	< 0,1	0,1 - 1
phosphoric acid	85%	95	> 1
maleic acid	20	< 0,1	< 0,1
lactic acid	10%	10-100	0,1 - 1
lactic acid	25%	20	< 0,1
lactic acid	50%	20-80	0,1 - 1
lactic acid	50%	boiling p.	> 1
formic acid	5-10%	20	< 0,1
formic acid	10%	80	> 1
formic acid	50%	24-40	0,1 - 1
formic acid	50%	boiling p.	> 1
formic acid	90%	20	> 1
perchloric acid	10%	20	> 1
perchloric acid	70%	20	> 1
acetic acid	1%	boiling p.	< 0,1
acetic acid	10%	boiling p.	0,1 - 1
acetic acid	20%	boiling p.	> 1
acetic acid	20%	20	< 0,1
acetic acid	80%	20	> 1
acetic acid	100%	boiling p.	> 1
oleic acid	20	< 0,1	< 0,1

TABLE OF CHEMICAL RESISTANCE OF MATERIALS

Chemical	Temp. C°	STEEL 1.4301 304	STEEL 1.4404 316L	Chemical	Temp. C°	STEEL 1.4301 304	STEEL 1.4404 316L
hypochlorous acid (chlorine water)		> 1	> 1	sodium sulphate	20	< 0,1	< 0,1
palmitic acid	10%	< 0,1	< 0,1	silver sulphate	20	< 0,1	< 0,1
picric acid		< 0,1	< 0,1	calcium sulphate	20	< 0,1	< 0,1
prussic acid		< 0,1	< 0,1	ferrous sulphate	20	< 0,1	< 0,1
sulphurous acid		0,1 - 1	< 0,1	ammonium sulphide	20	< 0,1	< 0,1
sulphuric acid	1%	> 1	0,1 - 1	barium sulphide	20	x	x
sulphuric acid	5%	0,1 - 1	< 0,1	sodium sulphide	20	0,1 - 1	> 1
sulphuric acid	5%	boiling p.	> 1	sodium sulphite	20	0,1 - 1	< 0,1
sulphuric acid	10%	20	> 1	sulphur	20	0,1 - 1	< 0,1
sulphuric acid	10%	boiling p.	> 1	caustic soda	20%	20	< 0,1
sulphuric acid	50%	20	> 1	caustic soda	50%	20	< 0,1
sulphuric acid	70%	20	> 1	caustic soda	80%	20	> 1
sulphuric acid	20-90%	20-100	> 1	fruit juices and pulp		20	0,1 - 1
sulphuric acid	93%	20	> 1	tannin (tannic acid)		20	< 0,1
hydrochloric acid	0.5%	20	0,1 - 1 P	turpentine		20	< 0,1
hydrochloric acid	0.5%	boiling p.	> 1	sodium thiosulfate		20	< 0,1
hydrochloric acid	1%	20	0,1 - 1 P	carbon monoxide		20	< 0,1
hydrochloric acid	40%	20	> 1	toluene		20	< 0,1
stearic acid		20	< 0,1	triethylamine		20	< 0,1
oxalic acid		20	< 0,1	phosphorous trichloride		20	< 0,1
carbonic acid		20	< 0,1	trichlorethylene		20	< 0,1
tartaric acid		20	> 1	sugar beet syrupe		20	< 0,1
fatty acids		20	< 0,1	sugarcane sap		20	x
oresol		20	< 0,1	potassium carbonate		20	< 0,1
milk		20	< 0,1	sodium carbonate		20	< 0,1
urine		20	< 0,1	calcium carbonate		20	< 0,1
urea (carbamide)		20	< 0,1	whiskey		20	< 0,1
potassium permanganate		20	< 0,1	wine		20	< 0,1
hydrogen peroxide	90%	20	< 0,1	bromine water		20	> 1
oil		20	< 0,1	chlorinated water		20	> 1
vinegar		20	< 0,1	chlorinated water	1g/l	20	0,1 - 1 P
ethyl acetate		20	< 0,1	chlorinated water	1 mg/l	20	< 0,1
cottonseed oil		20	< 0,1	distilled water		20	< 0,1
linseed oil		20	< 0,1	water ("acid mine")		20	< 0,1
oils and fats		20	< 0,1	sea water (natural)		20	0,1 - 1 P
mineral oils		20	x	water (fresh)		20	< 0,1
petroleum oils		20	< 0,1	water (salt)		20	< 0,1
oleum		20	< 0,1	ammonium hydroxide		20	< 0,1
beer		20	< 0,1	barium hydroxide	10%	20	x
sodium hypochlorite		20	0,1 - 1	potassium hydroxide		20	< 0,1
calcium hypochlorite		20	> 1	sodium hydroxide		20	0,1 - 1
caustic potash		20	< 0,1	calcium hydroxide		20	0,1 - 1
photographic solutions		20	> 1	bleach	12,5% Cl	20	x
electroplating solutions		20	< 0,1	sodium base	20%	50	< 0,1
ammonium sulphate		20	0,1 - 1	sodium base	20%	100	< 0,1
barium sulphate		20	< 0,1	sodium base	40%	100	0,1 - 1
zinc sulphate		20	< 0,1	sodium ferrocyanide		20	< 0,1
aluminum sulphate		20	< 0,1				
magnesium sulphate		20	< 0,1				
copper sulphate		20	< 0,1				
nickel sulphate		20	< 0,1				

TABLE DESIGNATIONS

Corrosion factor
(mm/year)

Resistance

Corrosion agent

< 0,1
0,1 - 1
> 1
x

complete
partial
non resistant
lack of data

S
P

stress corosion risk
pitting corosion risk

FLOOR DRAINS

H. Design

Ladder grating



Grating without edges for higher hygiene.

Ladder anty slip grating



Ladder grating with antislip surface.

Plate grating



Hidden flat bars to prevent from formation of dirt on edges.

Standard Design

Mesh grating



Deburred edges to minimize accumulation of solid residues that could be a source of bacteria.

Perforated sheet grating



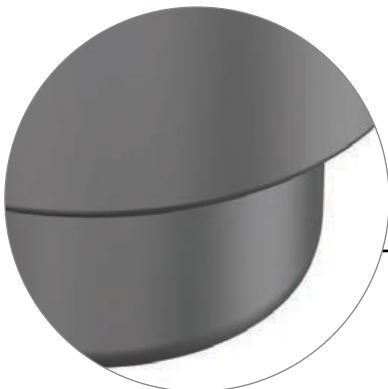
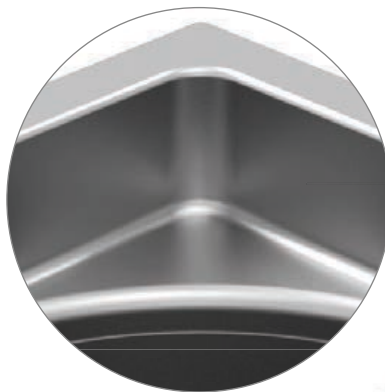
Hidden flat bars to prevent from formation of dirt on edges.

Ladder grating

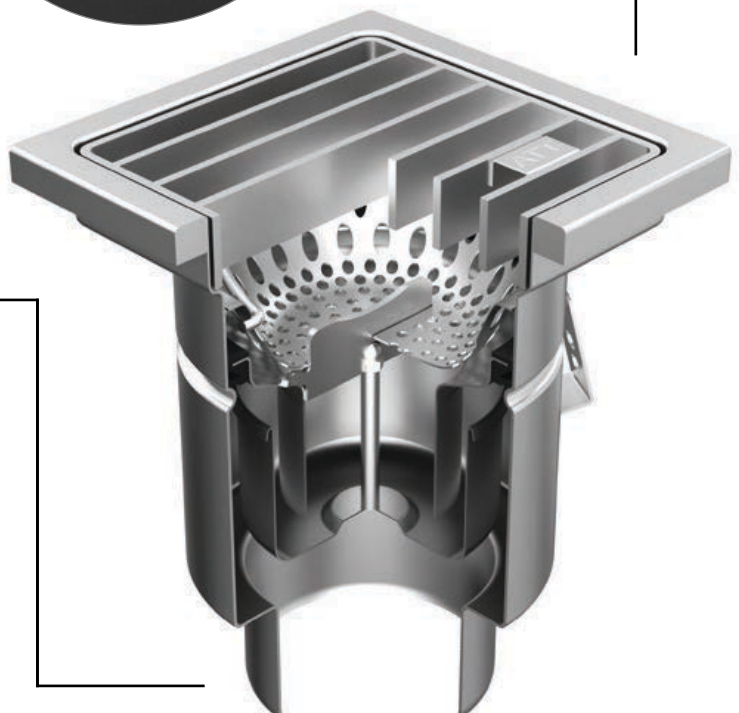


Fully welded flat bars.

Pressed upper part with no sharp corners facilitates removal of contamination and prevents growth of bacteria.



Pressed body, with no sharp edges or welded corner joints prevents the accumulation of contamination.



FLOOR DRAINS

Medium Duty Square - Single Body (6" to 8")



Rw
(Floor Clean Out)

WmV1

WmH1

Medium Duty Round - Single Body (6" to 8")



DcV1
(Floor Clean Out)

DmV1

DmH1

Medium Duty Square - Adjustable Body (6" to 8")



WmV2

WmV2

WmH2

Medium Duty Round - Adjustable Body (6" to 8")



DmV2

DmV2

DmH2

Heavy Duty Square - Single Body (8", 10", 12", & 16")



WV1

WV1

WH1

Heavy Duty Round - Single Body (8", 10", 12", & 16")



DV1

DH1

DH1

Heavy Duty Square - Adjustable Body (8", 10", 12", & 16")



WmV2

WmH2

Heavy Duty Round - Adjustable Body (8", 10", 12", & 16")



DmV2

DmH2

Super Duty Square - Single Body (8", 12", & 16")



WfV1

(Floor Sink; 12", 24")

WSV1

WSV1

Super Duty Round - Single Body (8", 12", & 16")



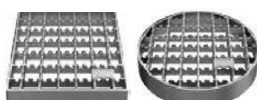
DSV1

DSV1

GRATING SYMBOLS



Perforated sheet - B
Load Class A
3,372lbs, 15kn (40-70psi)



Mesh anti slip - K
Load Class A
3,372lbs,
15kn (40-70psi)



Ladder - D
Load Class B
28,100lbs,
125kn (40-70psi)



Plate - P
Load Class C
56,200lbs,
250kn (719-1,160psi)



Perforated Plate - Pp
Load Class C
56,200lbs,
250kn (719-1,160psi)



Tight cover - S
Load Class B
28,100lbs,
125kn (40-70psi)

FLOOR DRAINS

Model Selection: (Model ID)-(Width)-(Depth)-(Pipe Size)-(Grate Style)-*(Options & Accessories)

Example: WmV1-6-1-2-D-*FB

Products are typically constructed from 14GA/ 2mm (12GA/ 3mm available) AISI304 or AISI316L stainless steel. Hygienic certified welds and food-grade passivated corrosion-resistant finish.

6" SQUARE MEDIUM DUTY LOW PROFILE- SINGLE BODY POINT DRAIN

Drain Type	Model: (USA & Canada)	Model: (International)	Pipe Size	Dimensions		
				Width	Height	Outlet
6" SQUARE MEDIUM DUTY SINGLE BODY VERTICAL OUTLET	WmV1-6-1-2	Wm150/60V1	2"	5-7/8" * x 5-7/8" [150x150]	7/8" [0.89]	2-3/8" [60]
	WmV1-6-1-3	Wm150/89V1	3"	5-7/8" * x 5-7/8" [150x150]	7/8" [0.89]	3-1/2" [89]
	WmV1-6-1-4	Wm150/114V1	4"	5-7/8" * x 5-7/8" [150x150]	7/8" [0.89]	4-1/2" [114]



6" SQUARE MEDIUM DUTY LOW PROFILE- ADJUSTABLE BODY POINT DRAIN

Drain Type	Model: (USA & Canada)	Model: (International)	Pipe Size	Dimensions		
				Width	Height	Outlet
6" SQUARE MEDIUM DUTY ADJUSTABLE BODY VERTICAL OUTLET	WmV2-6-1-2	Wm150/60V2	2"	5-7/8" * x 5-7/8" [150x150]	7/8" [0.89]	2-3/8" [60]
	WmV2-6-1-3	Wm150/85V2	3"	5-7/8" * x 5-7/8" [150x150]	7/8" [0.89]	3-1/2" [89]
	WmV2-6-1-4	Wm150/110V2	4"	5-7/8" * x 5-7/8" [150x150]	7/8" [0.89]	4-1/2" [114]



6" ROUND MEDIUM DUTY LOW PROFILE - SINGLE BODY POINT DRAIN

Drain Type	Model: (USA & Canada)	Model: (International)	Pipe Size	Dimensions		
				Width	Height	Outlet
6" ROUND MEDIUM DUTY SINGLE BODY VERTICAL OUTLET	DmV1-6-1-2	Dm160/60V1	2"	6-5/16" [160]	2-1/2" [63.5]	2-3/8" [60]
	DmV1-6-1-3	Dm160/89V1	3"	6-5/16" [160]	2-1/2" [63.5]	3-1/2" [89]
	DmV1-6-1-4	Dm160/114V1	4"	6-5/16" [160]	2-1/2" [63.5]	4-1/2" [114]



6" ROUND MEDIUM DUTY LOW PROFILE - ADJUSTABLE BODY POINT DRAIN

Drain Type	Model: (USA & Canada)	Model: (International)	Pipe Size	Dimensions		
				Width	Height	Outlet
6" ROUND MEDIUM DUTY ADJUSTABLE BODY VERTICAL OUTLET	DmV2-6-1-2	Dm150/60V2	2"	6-5/16" [160]	2-1/2" [63.5]	2-3/8" [60]
	DmV2-6-1-3	Dm150/85V2	3"	6-5/16" [160]	2-1/2" [63.5]	3-1/2" [89]
	DmV2-6-1-4	Dm150/110V2	4"	6-5/16" [160]	2-1/2" [63.5]	4-1/2" [114]

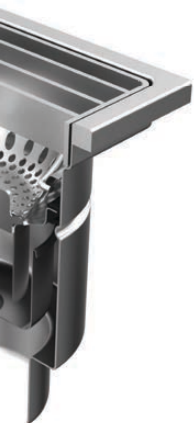
GENERAL INFORMATION

By standard, all floor drains and rodding eyes are made of stainless steel: AISI 304, EN 1.4301 and AISI 316L, EN 1.4404. The type of drain depends on the load class, the amount of drained liquid (medium) and design parameters (e.g. ceiling thickness).

Floor drains are made of sheet metal of thickness adapted to a defined type of drain. All elements are welded using argon shield, and then are pickled, thus ensuring high quality of joints.

ADVANTAGES OF FLOOR DRAINS

- Highest hygienic design and construction standards, following EHEDG guidelines,
- Possibility to select a grate depending on application and load class,
- Easy installation,
- Due to suitable trap design, each gully is also the sewer rodding eye,
- Simple design
- Sasy and effective cleaning



FLOOR DRAINS

Model Selection: (Model ID)-(Width)-(Depth)-(Pipe Size)-(Grate Style)-(Options & Accessories)

Example: WmV1-6-1-2-D-*FB

Products are typically constructed from 14GA/2mm (12GA/3mm available) AISI304 or AISI316L stainless steel. Hygienic certified welds and food-grade passivated corrosion-resistant finish.

6" SQUARE MEDIUM DUTY - SINGLE BODY POINT DRAIN

Drain Type	Model: (USA & Canada)	Model: (International)	Pipe Size	Dimensions			
				Width	Height	Outlet	
6" SQUARE MEDIUM DUTY SINGLE BODY	VERTICAL OUTLET	WmV1-6-5-2	Wm150/60V1	2"	5-7/8" x 5-7/8" [150x150]	5-3/16" [132]	2-3/8" [60]
		WmV1-6-5-3	Wm150/89V1	3"	5-7/8" x 5-7/8" [150x150]	5-3/16" [132]	3-1/2" [89]
		WmV1-6-5-4	Wm150/114V1	4"	5-7/8" x 5-7/8" [150x150]	4-15/16" [125]	4-1/2" [114]
	HORIZONTAL OUTLET	WmH1-6-5-2	Wm150/60H1	2"	5-7/8" x 5-7/8" [150x150]	5-3/16" [132]	2-3/8" [60]
		WmH1-6-5-3	Wm150/89H1	3"	5-7/8" x 5-7/8" [150x150]	5-3/16" [132]	3-1/2" [89]
		WmH1-6-5-4	Wm150/114H1	4"	5-7/8" x 5-7/8" [150x150]	4-3/4" [120]	4-1/2" [114]



6" SQUARE MEDIUM DUTY - ADJUSTABLE BODY POINT DRAIN

Drain Type	Model: (USA & Canada)	Model: (International)	Pipe Size	Dimensions			
				Width	Height	Outlet	
6" SQUARE MEDIUM DUTY ADJUSTABLE BODY	VERTICAL OUTLET	WmV2-6-5-2	Wm150/60V2	2"	5-7/8" x 5-7/8" [150x150]	5-1/8" [130]	2-3/8" [60]
		WmV2-6-5-3	Wm150/85V2	3"	5-7/8" x 5-7/8" [150x150]	5-1/8" [130]	3-1/2" [89]
		WmV2-6-5-4	Wm150/110V2	4"	5-7/8" x 5-7/8" [150x150]	5-1/8" [130]	4-1/2" [114]
	HORIZONTAL OUTLET	WmH2-6-5-2	Wm150/60H2	2"	5-7/8" x 5-7/8" [150x150]	5-1/8" [130]	2-3/8" [60]
		WmH2-6-5-3	Wm150/85H2	3"	5-7/8" x 5-7/8" [150x150]	5-1/8" [130]	3-1/2" [89]
		WmH2-6-5-4	Wm150/110H2	4"	5-7/8" x 5-7/8" [150x150]	5-1/8" [130]	4-1/2" [114]



6" ROUND MEDIUM DUTY - SINGLE BODY POINT DRAIN

Drain Type	Model: (USA & Canada)	Model: (International)	Pipe Size	Dimensions			
				Width	Height	Outlet	
6" ROUND MEDIUM DUTY SINGLE BODY	VERTICAL OUTLET	DmV1-6-6-2	Dm160/60V1	2"	6-5/16" [160]	6-1/8" [156]	2-3/8" [60]
		DmV1-6-6-3	Dm160/89V1	3"	6-5/16" [160]	6-1/8" [156]	3-1/2" [89]
		DmV1-6-6-4	Dm160/114V1	4"	6-5/16" [160]	6-1/8" [156]	4-1/2" [114]
	HORIZONTAL OUTLET	DmH1-6-6-2	Dm160/60H1	2"	6-5/16" [160]	6-1/8" [156]	2-3/8" [60]
		DmH1-6-6-3	Dm160/89H1	3"	6-5/16" [160]	6-1/8" [156]	3-1/2" [89]
		DmH1-6-6-4	Dm160/114H1	4"	6-5/16" [160]	6-1/8" [156]	4-1/2" [114]



6" ROUND MEDIUM DUTY - ADJUSTABLE BODY POINT DRAIN

Drain Type	Model: (USA & Canada)	Model: (International)	Pipe Size	Dimensions			
				Width	Height	Outlet	
6" ROUND MEDIUM DUTY ADJUSTABLE BODY	VERTICAL OUTLET	DmV2-6-6-2	Dm150/60V2	2"	6-5/16" [160]	5-1/8" [130]	2-3/8" [60]
		DmV2-6-6-3	Dm150/85V2	3"	6-5/16" [160]	5-1/8" [130]	3-1/2" [89]
		DmV2-6-6-4	Dm150/110V2	4"	6-5/16" [160]	5-1/8" [130]	4-1/2" [114]
	HORIZONTAL OUTLET	DmH2-6-6-2	Dm150/60H2	2"	6-5/16" [160]	5-5/16" [135]	2-3/8" [60]
		DmH2-6-6-3	Dm150/85H2	3"	6-5/16" [160]	5-5/16" [135]	3-1/2" [89]
		DmH2-6-6-4	Dm150/110H2	4"	6-5/16" [160]	5-5/16" [135]	4-1/2" [114]



FLOOR DRAINS

Model Selection: (Model ID)-(Width)-(Depth)-(Pipe Size)-(Grate Style)-(Options & Accessories)

Example: WV1-8-2-3-D-*FB

Products are typically constructed from 14GA/ 2mm (12GA/ 3mm available) AISI304 or AISI316L stainless steel. Hygienic certified welds and food-grade passivated corrosion-resistant finish.

8" SQUARE HEAVY DUTY - SINGLE BODY POINT DRAIN

Drain Type	Model: (USA & Canada)	Model: (International)	Pipe Size	Dimensions		
				Width	Height	Outlet
8" SQUARE HEAVY DUTY SINGLE BODY VERTICAL OUTLET	WV1-8-2-2	W200/60V1	2"	7-7/8" x 7-7/8" [200 x 200]	2-1/2" [63.5]	2-3/8" [60]
	WV1-8-2-3	W200/89V1	3"	7-7/8" x 7-7/8" [200 x 200]	2-1/2" [63.5]	3-1/2" [89]
	WV1-8-2-4	W200/114V1	4"	7-7/8" x 7-7/8" [200 x 200]	2-1/2" [63.5]	4-1/2" [114]



8" SQUARE HEAVY DUTY - ADJUSTABLE BODY POINT DRAIN

Drain Type	Model: (USA & Canada)	Model: (International)	Pipe Size	Dimensions		
				Width	Height	Outlet
8" SQUARE HEAVY DUTY ADJUSTABLE BODY VERTICAL OUTLET	WV2-8-2-2	W200/60V2	2"	7-7/8" x 7-7/8" [200 x 200]	2-1/2" [63.5]	2-3/8" [60]
	WV2-8-2-3	W200/85V2	3"	7-7/8" x 7-7/8" [200 x 200]	2-1/2" [63.5]	3-1/2" [89]
	WV2-8-2-4	W200/110V2	4"	7-7/8" x 7-7/8" [200 x 200]	2-1/2" [63.5]	4-1/2" [114]

8" SQUARE HEAVY DUTY - SINGLE BODY POINT DRAIN

Drain Type	Model: (USA & Canada)	Model: (International)	Pipe Size	Dimensions		
				Width	Height	Outlet
8" SQUARE HEAVY DUTY SINGLE BODY VERTICAL OUTLET	WV1-8-4-2	W200/60V1	2"	7-7/8" x 7-7/8" [200 x 200]	4-1/2" [114]	2-3/8" [60]
	WV1-8-4-3	W200/89V1	3"	7-7/8" x 7-7/8" [200 x 200]	4-1/2" [114]	3-1/2" [89]
	WV1-8-4-4	W200/114V1	4"	7-7/8" x 7-7/8" [200 x 200]	4-1/2" [114]	4-1/2" [114]



8" SQUARE HEAVY DUTY - ADJUSTABLE BODY POINT DRAIN

Drain Type	Model: (USA & Canada)	Model: (International)	Pipe Size	Dimensions		
				Width	Height	Outlet
8" SQUARE HEAVY DUTY ADJUSTABLE BODY VERTICAL OUTLET	WV2-8-4-2	W200/60V2	2"	7-7/8" x 7-7/8" [200 x 200]	4-1/2" [114]	2-3/8" [60]
	WV2-8-4-3	W200/85V2	3"	7-7/8" x 7-7/8" [200 x 200]	4-1/2" [114]	3-1/2" [89]
	WV2-8-4-4	W200/110V2	4"	7-7/8" x 7-7/8" [200 x 200]	4-1/2" [114]	4-1/2" [114]



FLOOR DRAINS

Model Selection: (Model ID)-(Width)-(Depth)-(Pipe Size)-(Grate Style)-(Options & Accessories)

Example: WV1-8-2-3-D-*FB

Products are typically constructed from 14GA/ 2mm (12GA/ 3mm available) AISI304 or AISI316L stainless steel. Hygienic certified welds and food-grade passivated corrosion-resistant finish.

8" SQUARE HEAVY DUTY - SINGLE BODY POINT DRAIN

Drain Type	Model: (USA & Canada)	Model: (International)	Pipe Size	Dimensions		
				Width	Height	Outlet
8" SQUARE HEAVY DUTY SINGLE BODY VERTICAL OUTLET	WV1-8-7-2	W200/60V1	2"	7-7/8" x 7-7/8" [200 x 200]	7-1/2" [192]	2-3/8" [60]
	WV1-8-7-3	W200/89V1	3"	7-7/8" x 7-7/8" [200 x 200]	7-1/2" [192]	3-1/2" [89]
	WV1-8-7-4	W200/114V1	4"	7-7/8" x 7-7/8" [200 x 200]	7-1/2" [192]	4-1/2" [114]
	WH1-8-7-2	W200/60H1	2"	7-7/8" x 7-7/8" [200 x 200]	7-1/2" [192]	2-3/8" [60]
	WH1-8-7-3	W200/89H1	3"	7-7/8" x 7-7/8" [200 x 200]	7-1/2" [192]	3-1/2" [89]
	WH1-8-7-4	W200/114H1	4"	7-7/8" x 7-7/8" [200 x 200]	7-1/2" [192]	4-1/2" [114]



8" SQUARE HEAVY DUTY - ADJUSTABLE BODY POINT DRAIN BODY POINT DRAIN

Drain Type	Model: (USA & Canada)	Model: (International)	Pipe Size	Dimensions		
				Width	Height	Outlet
8" SQUARE HEAVY DUTY ADJUSTABLE BODY VERTICAL OUTLET	WV2-8-7-2	W200/60V2	2"	7-7/8" x 7-7/8" [200 x 200]	7-7/8" [200]	2-3/8" [60]
	WV2-8-7-3	W200/85V2	3"	7-7/8" x 7-7/8" [200 x 200]	7-7/8" [200]	3-1/2" [89]
	WV2-8-7-4	W200/110V2	4"	7-7/8" x 7-7/8" [200 x 200]	7-7/8" [200]	4-1/2" [114]
	WH2-8-7-2	W200/60H2	2"	7-7/8" x 7-7/8" [200 x 200]	7-7/16" [189]	2-3/8" [60]
	WH2-8-7-3	W200/85H2	3"	7-7/8" x 7-7/8" [200 x 200]	7-7/16" [189]	3-1/2" [89]
	WH2-8-7-4	W200/110H2	4"	7-7/8" x 7-7/8" [200 x 200]	8-13/16" [224]	4-1/2" [114]



8" ROUND HEAVY DUTY - SINGLE BODY POINT DRAIN

Drain Type	Model: (USA & Canada)	Model: (International)	Pipe Size	Dimensions		
				Width	Height	Outlet
8" ROUND HEAVY DUTY SINGLE BODY VERTICAL OUTLET	DV1-8-8-2	D200/60V1	2"	7-13/16" [198]	7-7/16" [189]	2-3/8" [60]
	DV1-8-8-3	D200/89V1	3"	7-13/16" [198]	7-7/16" [189]	3-1/2" [89]
	DV1-8-8-4	D200/114V1	4"	7-13/16" [198]	7-7/16" [189]	4-1/2" [114]
	DH1-8-8-2	D200/60H1	2"	7-13/16" [198]	7-7/16" [189]	2-3/8" [60]
	DH1-8-8-3	D200/89H1	3"	7-13/16" [198]	7-7/16" [189]	3-1/2" [89]
	DH1-8-8-4	D200/114H1	4"	7-13/16" [198]	7-7/16" [189]	4-1/2" [114]



8" ROUND HEAVY DUTY - ADJUSTABLE BODY POINT DRAIN BODY POINT DRAIN

Drain Type	Model: (USA & Canada)	Model: (International)	Pipe Size	Dimensions		
				Width	Height	Outlet
8" ROUND HEAVY DUTY ADJUSTABLE BODY VERTICAL OUTLET	DV2-8-8-2	D200/60V2	2"	7-13/16" [198]	7-7/8" [200]	2-3/8" [60]
	DV2-8-8-3	D200/85V2	3"	7-13/16" [198]	7-7/8" [200]	3-1/2" [89]
	DV2-8-8-4	D200/110V2	4"	7-13/16" [198]	7-7/8" [200]	4-1/2" [114]
	DH2-8-8-2	D200/60H2	2"	7-13/16" [198]	7-7/8" [200]	2-3/8" [60]
	DH2-8-8-3	D200/85H2	3"	7-13/16" [198]	7-7/8" [200]	3-1/2" [89]
	DH2-8-8-4	D200/110H2	4"	7-13/16" [198]	7-7/8" [200]	4-1/2" [114]



FLOOR DRAINS

Model Selection: (Model ID)-(Width)-(Depth)-(Pipe Size)-(Grate Style)-(Options & Accessories)

Example: WV1-12-9-3-D-*FB

Products are typically constructed from 14GA/ 2mm (12GA/ 3mm available) AISI304 or AISI316L stainless steel. Hygienic certified welds and food-grade passivated corrosion-resistant finish.

12" SQUARE LOW PROFILE HEAVY DUTY - SINGLE BODY POINT DRAIN

Drain Type	Model: (USA & Canada)	Model: (International)	Pipe Size	Dimensions		
				Width	Height	Outlet
12" SQUARE HEAVY DUTY SINGLE BODY VERTICAL OUTLET	WV1-12-2-3	W300/89V1	3"	11-13/16" x 11-13/16" [300 x 300]	2-1/2" [63.5]	3-1/2" [89]
	WV1-12-2-4	W300/114V1	4"	11-13/16" x 11-13/16" [300 x 300]	2-1/2" [63.5]	4-1/2" [114]
	WV1-12-2-6	W300/168V1	6"	11-13/16" x 11-13/16" [300 x 300]	2-1/2" [63.5]	6-5/8" [168]
	WV1-12-4-3	W300/89V1	3"	11-13/16" x 11-13/16" [300 x 300]	4-1/2" [114]	3-1/2" [89]
	WV1-12-4-4	W300/114V1	4"	11-13/16" x 11-13/16" [300 x 300]	4-1/2" [114]	4-1/2" [114]
	WV1-12-4-6	W300/168V1	6"	11-13/16" x 11-13/16" [300 x 300]	4-1/2" [114]	6-5/8" [168]

12" ROUND LOW PROFILE HEAVY DUTY - SINGLE BODY POINT DRAIN

Drain Type	Model: (USA & Canada)	Model: (International)	Pipe Size	Dimensions		
				Width	Height	Outlet
12" ROUND HEAVY DUTY SINGLE BODY VERTICAL OUTLET	DV1-12-2-3	D300/89V1	3"	11-13/16" [300]	2-1/2" [63.5]	3-1/2" [89]
	DV1-12-2-4	D300/114V1	4"	11-13/16" [300]	2-1/2" [63.5]	4-1/2" [114]
	DV1-12-2-6	D300/168V1	6"	11-13/16" [300]	2-1/2" [63.5]	6-5/8" [168]
	DV1-12-4-3	D300/89V1	3"	11-13/16" [300]	4-1/2" [114]	3-1/2" [89]
	DV1-12-4-4	D300/114V1	4"	11-13/16" [300]	4-1/2" [114]	4-1/2" [114]
	DV1-12-4-6	D300/168V1	6"	11-13/16" [300]	4-1/2" [114]	6-5/8" [168]

12" SQUARE HEAVY DUTY - SINGLE BODY POINT DRAIN

Drain Type	Model: (USA & Canada)	Model: (International)	Pipe Size	Dimensions			
				Width	Height	Outlet	
12" SQUARE HEAVY DUTY SINGLE BODY VERTICAL OUTLET	WV1-12-9-3	W300/89V1	3"	11-13/16" x 11-13/16" [300 x 300]	9-5/8" [244]	3-1/2" [89]	
	WV1-12-9-4	W300/114V1	4"	11-13/16" x 11-13/16" [300 x 300]	9-5/8" [244]	4-1/2" [114]	
	WV1-12-9-6	W300/168V1	6"	11-13/16" x 11-13/16" [300 x 300]	9-5/8" [244]	6-5/8" [168]	
	HORIZONTAL OUTLET	WH1-12-10-3	W300/89H1	3"	11-13/16" x 11-13/16" [300 x 300]	10-3/8" [264]	3-1/2" [89]
		WH1-12-10-4	W300/114H1	4"	11-13/16" x 11-13/16" [300 x 300]	10-3/8" [264]	4-1/2" [114]
		WH1-12-12-6	W300/168H1	6"	11-13/16" x 11-13/16" [300 x 300]	12-3/8" [314]	6-5/8" [168]

12" SQUARE HEAVY DUTY - ADJUSTABLE BODY POINT DRAIN

Drain Type	Model: (USA & Canada)	Model: (International)	Pipe Size	Dimensions			
				Width	Height	Outlet	
12" SQUARE HEAVY DUTY ADJUSTABLE BODY VERTICAL OUTLET	WV2-12-8-3	W300/85V2	3"	11-13/16" x 11-13/16" [300 x 300]	7-7/8" [200]	3-1/2" [89]	
	WV2-12-8-4	W300/110V2	4"	11-13/16" x 11-13/16" [300 x 300]	7-7/8" [200]	4-1/2" [114]	
	WV2-12-8-6	W300/160V2	6"	11-13/16" x 11-13/16" [300 x 300]	7-7/8" [200]	6-5/8" [168]	
	HORIZONTAL OUTLET	WH2-12-8-3	W300/85H2	3"	11-13/16" x 11-13/16" [300 x 300]	7-7/8" [200]	3-1/2" [89]
		WH2-12-8-4	W300/110H2	4"	11-13/16" x 11-13/16" [300 x 300]	7-7/8" [200]	4-1/2" [114]
		WH2-12-8-6	W300/160H2	6"	11-13/16" x 11-13/16" [300 x 300]	7-7/8" [200]	6-5/8" [168]



FLOOR DRAINS

Model Selection: (Model ID)-(Width)-(Depth)-(Pipe Size)-(Grate Style)-(Options & Accessories)

Example: WV1-12-9-3-D-*FB

Products are typically constructed from 14GA/ 2mm (12GA/ 3mm available) AISI304 or AISI316L stainless steel. Hygienic certified welds and food-grade passivated corrosion-resistant finish.

12" ROUND HEAVY DUTY - SINGLE BODY POINT DRAIN

Drain Type	Model: (USA & Canada)	Model: (International)	Pipe Size	Dimensions			
				Width	Height	Outlet	
12" ROUND HEAVY DUTY SINGLE BODY	VERTICAL OUTLET	DV1-12-10-3	D300/89V1	3"	11-13/16" [300]	9-7/16" [240]	3-1/2" [89]
		DV1-12-10-4	D300/114V1	4"	11-13/16" [300]	9-7/16" [240]	4-1/2" [114]
		DV1-12-10-6	D300/168V1	6"	11-13/16" [300]	9-7/16" [240]	6-5/8" [168]
	HORIZONTAL OUTLET	DH1-12-11-3	D300/89H1	3"	11-13/16" [300]	9-7/16" [240]	3-1/2" [89]
		DH1-12-11-4	D300/114H1	4"	11-13/16" [300]	9-7/16" [240]	4-1/2" [114]
		DH1-12-12-6	D300/168H1	6"	11-13/16" [300]	9-7/16" [240]	6-5/8" [168]



12" ROUND HEAVY DUTY - ADJUSTABLE BODY POINT DRAIN

Drain Type	Model: (USA & Canada)	Model: (International)	Pipe Size	Dimensions			
				Width	Height	Outlet	
12" ROUND HEAVY DUTY ADJUSTABLE BODY	VERTICAL OUTLET	DV2-12-10-3	D300/85V2	3"	11-13/16" [300]	7-7/8" [200]	3-1/2" [89]
		DV2-12-10-4	D300/110V2	4"	11-13/16" [300]	7-7/8" [200]	4-1/2" [114]
		DV2-12-10-6	D300/160V2	6"	11-13/16" [300]	7-7/8" [200]	6-5/8" [168]
	HORIZONTAL OUTLET	DH2-12-11-3	D300/85H2	3"	11-13/16" [300]	7-7/8" [200]	3-1/2" [89]
		DH2-12-11-4	D300/110H2	4"	11-13/16" [300]	7-7/8" [200]	4-1/2" [114]
		DH2-12-12-6	D300/160H2	6"	11-13/16" [300]	7-7/8" [200]	6-5/8" [168]



16" SQUARE HEAVY DUTY - SINGLE BODY POINT DRAIN

Drain Type	Model: (USA & Canada)	Model: (International)	Pipe Size	Dimensions			
				Width	Height	Outlet	
16" SQUARE HEAVY DUTY SINGLE BODY	VERTICAL OUTLET	WV1-16-13-3	W400/89V1	3"	15-3/4" x 15-3/4" [400 x 400]	13-1/8" [334]	3-1/2" [89]
		WV1-16-13-4	W400/114V1	4"	15-3/4" x 15-3/4" [400 x 400]	13-1/8" [334]	4-1/2" [114]
		WV1-16-13-6	W400/168V1	6"	15-3/4" x 15-3/4" [400 x 400]	13-1/8" [334]	6-5/8" [168]
	HORIZONTAL OUTLET	WH1-16-13-3	W400/89H1	3"	15-3/4" x 15-3/4" [400 x 400]	13-15/16" [354]	3-1/2" [89]
		WH1-16-13-4	W400/114H1	4"	15-3/4" x 15-3/4" [400 x 400]	13-15/16" [354]	4-1/2" [114]
		WH1-16-13-6	W400/168H1	6"	15-3/4" x 15-3/4" [400 x 400]	13-15/16" [354]	6-5/8" [168]

16" SQUARE HEAVY DUTY - ADJUSTABLE BODY POINT DRAIN

Drain Type	Model: (USA & Canada)	Model: (International)	Pipe Size	Dimensions			
				Width	Height	Outlet	
16" SQUARE HEAVY DUTY ADJUSTABLE BODY	VERTICAL OUTLET	WV2-16-8-3	W400/85V2	3"	15-3/4" x 15-3/4" [400 x 400]	7-7/8" [200]	3-1/2" [89]
		WV2-16-8-4	W400/110V2	4"	15-3/4" x 15-3/4" [400 x 400]	7-7/8" [200]	4-1/2" [114]
		WV2-16-8-6	W400/160V2	6"	15-3/4" x 15-3/4" [400 x 400]	7-7/8" [200]	6-5/8" [168]
	HORIZONTAL OUTLET	WH2-16-8-3	W400/85H2	3"	15-3/4" x 15-3/4" [400 x 400]	7-7/8" [200]	3-1/2" [89]
		WH2-16-8-4	W400/110H2	4"	15-3/4" x 15-3/4" [400 x 400]	7-7/8" [200]	4-1/2" [114]
		WH2-16-8-6	W400/160H2	6"	15-3/4" x 15-3/4" [400 x 400]	7-7/8" [200]	6-5/8" [168]

FLOOR DRAINS

Model Selection: (Model ID)-(Width)-(Depth)-(Pipe Size)-(Grate Style)-(Options & Accessories)

Example: WSV1-10-7-3-P-*FB

Products are typically constructed from 14GA/ 2mm (12GA/ 3mm available) AISI304 or AISI316L stainless steel. Hygienic certified welds and food-grade passivated corrosion-resistant finish.

10" SQUARE SUPER DUTY - SINGLE BODY POINT DRAIN

Drain Type	Model: (USA & Canada)	Model: (International)	Pipe Size	Dimensions		
				Width	Height	Outlet
10" SQUARE SUPER DUTY SINGLE BODY VERTICAL OUTLET	WSV1-10-2-3	WS240/89V1	3"	10"x10" [240 x 240]	2-1/2" [63.5]	3-1/2" [89]
	WSV1-10-2-4	WS240/114V1	4"	10"x10" [240 x 240]	2-1/2" [63.5]	4-1/2" [114]
	WSV1-10-4-3	WS240/89V1	3"	10"x10" [240 x 240]	4-1/2" [114]	3-1/2" [89]
	WSV1-10-4-4	WS240/114V1	4"	10"x10" [240 x 240]	4-1/2" [114]	4-1/2" [114]
	WSV1-10-7-3	WS240/89V1	3"	10"x10" [240 x 240]	7-1/2" [192]	3-1/2" [89]
	WSV1-10-7-4	WS240/114V1	4"	10"x10" [240 x 240]	7-1/2" [192]	4-1/2" [114]



10" ROUND SUPER DUTY - SINGLE BODY POINT DRAIN

Drain Type	Model: (USA & Canada)	Model: (International)	Pipe Size	Dimensions		
				Width	Height	Outlet
10" ROUND SUPER DUTY SINGLE BODY VERTICAL OUTLET	DSV1-10-2-3	DS240/89V1	3"	10"x10" [240 x 240]	2-1/2" [63.5]	3-1/2" [89]
	DSV1-10-2-4	DS240/114V1	4"	10"x10" [240 x 240]	2-1/2" [63.5]	4-1/2" [114]
	DSV1-10-4-3	DS240/89V1	3"	10"x10" [240 x 240]	4-1/2" [114]	3-1/2" [89]
	DSV1-10-4-4	DS240/114V1	4"	10"x10" [240 x 240]	4-1/2" [114]	4-1/2" [114]
	DSV1-10-7-3	DS240/89V1	3"	10"x10" [240 x 240]	7-1/2" [192]	3-1/2" [89]
	DSV1-10-7-4	DS240/114V1	4"	10"x10" [240 x 240]	7-1/2" [192]	4-1/2" [114]



13" SQUARE SUPER DUTY - SINGLE BODY POINT DRAIN

Drain Type	Model: (USA & Canada)	Model: (International)	Pipe Size	Dimensions		
				Width	Height	Outlet
13" SQUARE SUPER DUTY SINGLE BODY VERTICAL OUTLET	WSV1-13-2-3	WS338/89V1	3"	13" [338]	2-1/2" [63.5]	3-1/2" [89]
	WSV1-13-2-4	WS338/114V1	4"	13" [338]	2-1/2" [63.5]	4-1/2" [114]
	WSV1-13-2-6	WS338/168V1	6"	13" [338]	2-1/2" [63.5]	6-5/8" [168]
	WSV1-13-6-3	WS338/89V1	3"	13" [338]	6" [152]	3-1/2" [89]
	WSV1-13-6-4	WS338/114V1	4"	13" [338]	6" [152]	4-1/2" [114]
	WSV1-13-6-6	WS338/168V1	6"	13" [338]	6" [152]	6-5/8" [168]
	WSV1-13-10-3	WS338/89V1	3"	13" [338]	9-11/16" [189]	3-1/2" [89]
	WSV1-13-10-4	WS338/114V0	4"	13" [338]	9-11/16" [189]	4-1/2" [114]
	WSV1-13-10-6	WS338/168V1	6"	13" [338]	9-11/16" [189]	6-5/8" [168]



FLOOR DRAINS

Model Selection: (Model ID)-(Width)-(Depth)-(Pipe Size)-(Grate Style)-*(Options & Accessories)

Example: Wfv1-12-8-3-Pphg-*FB

Products are typically constructed from 14GA/ 2mm (12GA/ 3mm available) AISI304 or AISI316L stainless steel. Hygienic certified welds and food-grade passivated corrosion-resistant finish.

13" ROUND SUPER DUTY - SINGLE BODY POINT DRAIN

Drain Type	Model: (USA & Canada)	Model: (International)	Pipe Size	Dimensions		
				Width	Height	Outlet
13" ROUND SUPER DUTY SINGLE BODY VERTICAL OUTLET	DSV1-13-2-3	DS338/89V1	3"	13" [338]	2-1/2" [63.5]	3-1/2" [89]
	DSV1-13-2-4	DS338/114V1	4"	13" [338]	2-1/2" [63.5]	4-1/2" [114]
	DSV1-13-2-6	DS338/168V1	6"	13" [338]	2-1/2" [63.5]	6-5/8" [168]
	DSV1-13-6-3	DS338/89V1	3"	13" [338]	6" [152]	3-1/2" [89]
	DSV1-13-6-4	DS338/114V1	4"	13" [338]	6" [152]	4-1/2" [114]
	DSV1-13-6-6	DS338/168V1	6"	13" [338]	6" [152]	6-5/8" [168]
	DSV1-13-10-3	DS338/89V1	3"	13" [338]	9-11/16" [189]	3-1/2" [89]
	DSV1-13-10-4	DS338/114V0	4"	13" [338]	9-11/16" [189]	4-1/2" [114]
	DSV1-13-10-6	DS338/168V1	6"	13" [338]	9-11/16" [189]	6-5/8" [168]



12" SQUARE HEAVY DUTY - SINGLE BODY FLOOR SINK

Drain Type	Model: (USA & Canada)	Model: (International)	Pipe Size	Dimensions		
				Width	Height	Outlet
12" SQUARE HEAVY DUTY FLOOR SINK SINGLE BODY VERTICAL OUTLET	Wfv1-12-6-3	WF300/89V1	3"	12" x 12" [305 x 305]	5-7/8" [150]	3-1/2" [89]
	Wfv1-12-6-4	WF300/114V1	4"	12" x 12" [305 x 305]	5-7/8" [150]	4-1/2" [114]
	Wfv1-12-6-6	WF300/168V1	6"	12" x 12" [305 x 305]	5-7/8" [150]	6-5/8" [168]
	Wfv1-12-8-3	WF300/89V1	3"	12" x 12" [305 x 305]	7-1/2" [192]	3-1/2" [89]
	Wfv1-12-8-4	WF300/114V1	4"	12" x 12" [305 x 305]	7-1/2" [192]	4-1/2" [114]
	Wfv1-12-8-6	WF300/168V1	6"	12" x 12" [305 x 305]	7-1/2" [192]	6-5/8" [168]
	Wfv1-12-9-3	WF300/89V1	3"	12" x 12" [305 x 305]	9-5/8" [244]	3-1/2" [89]
	Wfv1-12-9-4	WF300/114V1	4"	12" x 12" [305 x 305]	9-5/8" [244]	4-1/2" [114]
	Wfv1-12-9-6	WF300/168V1	6"	12" x 12" [305 x 305]	9-5/8" [244]	6-5/8" [168]



24" SQUARE HEAVY DUTY - SINGLE BODY FLOOR SINK

Drain Type	Model: (USA & Canada)	Model: (International)	Pipe Size	Dimensions		
				Width	Height	Outlet
24" SQUARE HEAVY DUTY FLOOR SINK SINGLE BODY VERTICAL OUTLET	Wfv1-24-18-3	WF600/89V1	3"	24" x 24" [610x 610]	18" [457]	3-1/2" [89]
	Wfv1-24-18-4	WF600/114V1	4"	24" x 24" [610x 610]	18" [457]	4-1/2" [114]
	Wfv1-24-18-6	WF600/168V1	6"	24" x 24" [610x 610]	18" [457]	6-5/8" [168]
	Wfv1-24-24-3	WF600/89V1	3"	24" x 24" [610x 610]	24" [610]	3-1/2" [89]
	Wfv1-24-24-4	WF600/114V1	4"	24" x 24" [610x 610]	24" [610]	4-1/2" [114]
	Wfv1-24-24-6	WF600/168V1	6"	24" x 24" [610x 610]	24" [610]	6-5/8" [168]

FLOOR CLEANOUT DRAINS

Model Selection: (Model ID)-(Width)-(Depth)-(Pipe Size)-(Grate Style)-*(Options & Accessories)

Example: Rw-6-5-3-S-*VPG

Products are typically constructed from 14GA/ 2mm (12GA/ 3mm available) AISI304 or AISI316L stainless steel. Hygienic certified welds and food-grade passivated corrosion-resistant finish.

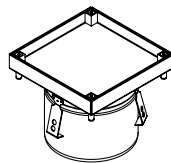
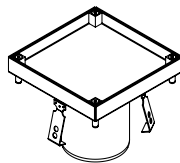
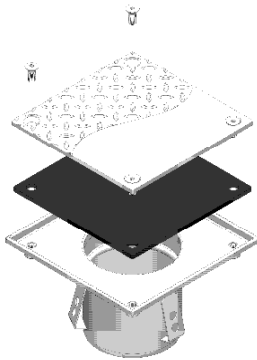
6" SQUARE FLOOR CLEANOUT w/ Gas Tight Neoprene Rodding eye Gasket

Drain Type	Model: (USA & Canada)	Model: (International)	Pipe Size	Dimensions		
				Width	Height	Outlet
6" SQUARE FLOOR CLEANOUT SINGLE BODY VERTICAL OUTLET	Rw-6-5-2-S	Rw150/60V1	2"	5-7/8" x 5-7/8" [150x150]	5-3/16" [132]	2-3/8" [60]
	Rw-6-5-3-S	Rw150/89V1	3"	5-7/8" x 5-7/8" [150x150]	5-3/16" [132]	3-1/2" [89]
	Rw-6-5-4-S	Rw150/114V1	4"	5-7/8" x 5-7/8" [150x150]	4-15/16" [125]	4-1/2" [114]



6" ROUND FLOOR CLEANOUT w/ Solid Plate grate & Gas Tight Neoprene Ring Gasket

Drain Type	Model: (USA & Canada)	Model: (International)	Pipe Size	Dimensions		
				Width	Height	Outlet
6" ROUND FLOOR CLEANOUT SINGLE BODY VERTICAL OUTLET	DmV1-6-1-2-S	Dm160/60V1-S	2"	6-5/16" [160]	2-1/2" [63.5]	2-3/8" [60]
	DmV1-6-1-3-S	Dm160/89V1-S	3"	6-5/16" [160]	2-1/2" [63.5]	3-1/2" [89]
	DmV1-6-1-4-S	Dm160/114V1-S	4"	6-5/16" [160]	2-1/2" [63.5]	4-1/2" [114]



These sewage system elements are widely applied in industrial facilities (chemical, food, pharmaceutical plants etc.). Use of a rodding eye allows quick access to the underfloor area and easy cleaning.

Rodding eyes are made of AISI304 or AISI316 grade steel. Penetration of water is prevented by the seal installed between the bolted cover and the body.

Two types of covers are available:

- Smooth (G)
- Checker diamond plate (R)
- Tileable

Edge finish allows for installation in any type of floor. We offer rodding eyes for sewage pipes of diameters from DN110.

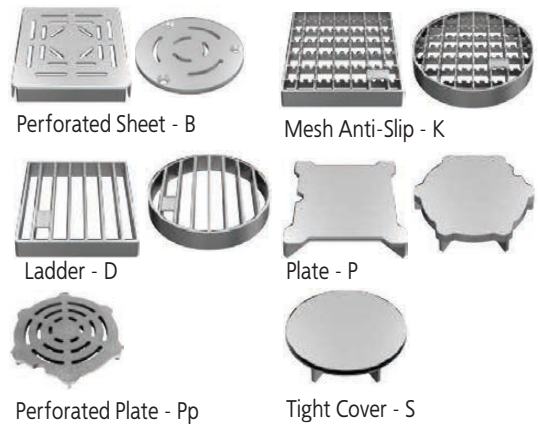
ADVANTAGES OF RODDING EYES

- Resistant to corrosion
- Provide a barrier against odors
- Easy installation
- Dimensions of offered rodding eyes are adapted to the sewage system diameter
- An aesthetically pleasing design element

FLOOR DRAIN GRATING AND ACCESSORIES

Grate ID:	Grating Description
B	Perforated Sheet Grating - (Load Class-A)
K	Anti-Slip Mesh Grating - (Load Class-A)
D	Ladder Grating - (Load Class-B)
E	Anti-Slip Ladder Grating - (Load Class-B)
P	1/2" thick Solid Plate w/ Perimeter Slots - (Load Class-C)
Pp	1/2" thick Perforated Solid Plate - (Load Class-C)
S	Solid Gas Tight Cover w/ Vacuum Handle - (Load Class-C) <i>(Round Drain Only)</i>

***Load Class-D and above are available upon request in grating style "P" and "Pp"; these are also available in checker diamond plate.*



Item ID:	Accessories Description
FC	Flange and Clamp <i>(Single Body Drain Only)</i>
DBS	Dome Bottom Strainer
FB	Filter Basket
SB	Sediment Basket
XT	Removable Trap <i>(*Refer to local code for acceptance)</i>
TP	1/2" NPT Trap Primer Connection
VPG	Grate locking w/Vandal Proof Screws
hg	Half open grating
tg	Three quarter open grating
S10	Schedule 10 Outlet
S40	Schedule 40 Outlet
316L	Type AISI316L Stainless Steel



Filter Baskets - FB

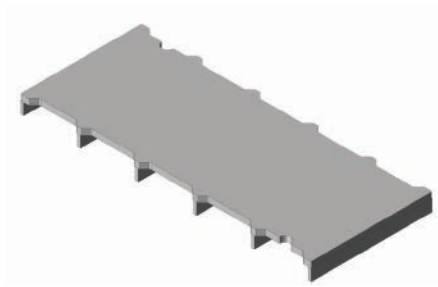


Sediment Baskets - SB

HYGIENIC - TRENCH, KITCHEN CHANNELS & SLOT DRAINS

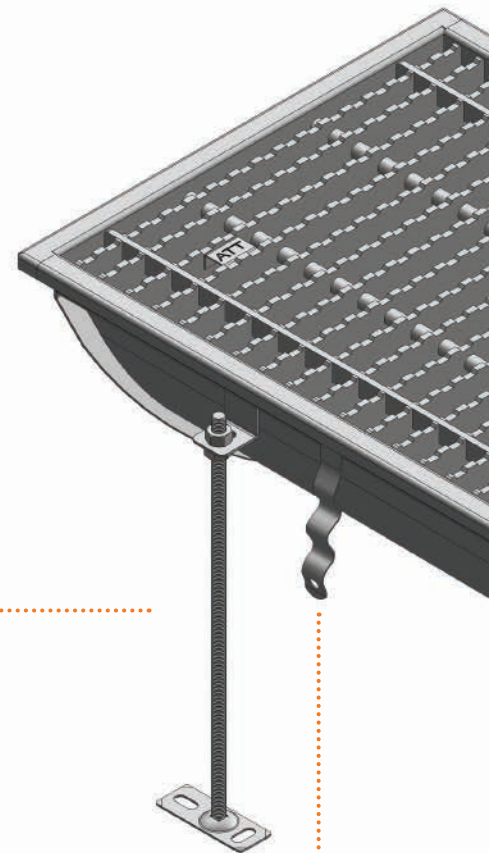
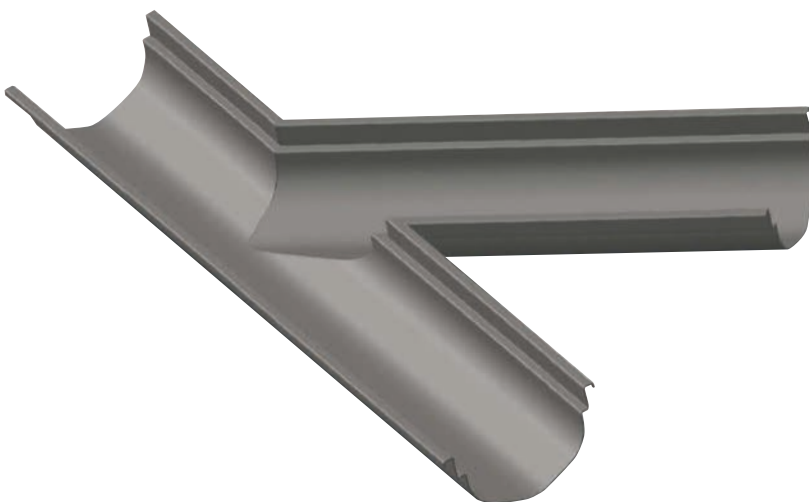


PLATE GRATING



Innovative rounded bottom hygienic channel:

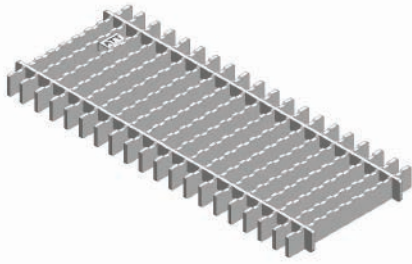
- flow is more laminar in comparison with typical rectangular shape bottom of the channel
- the discharge of fluids into the channel causes less pollution
- user needs less amount of water to keep the channel clean



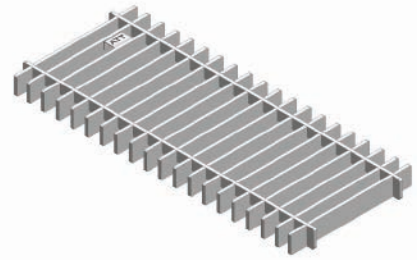
Benefits:

- faster transfer of fluids to the outlet
- reduction of the bacteria accumulation
- ecology & efficiency

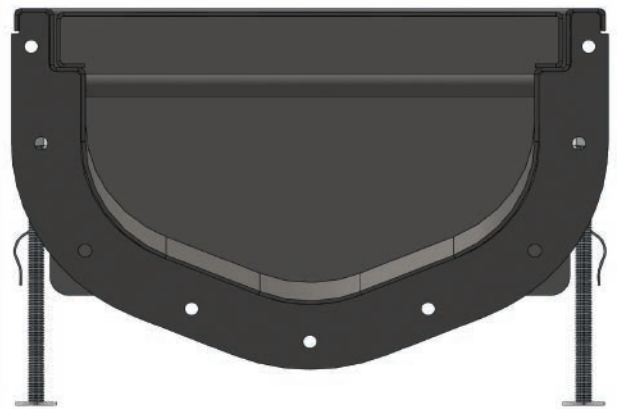
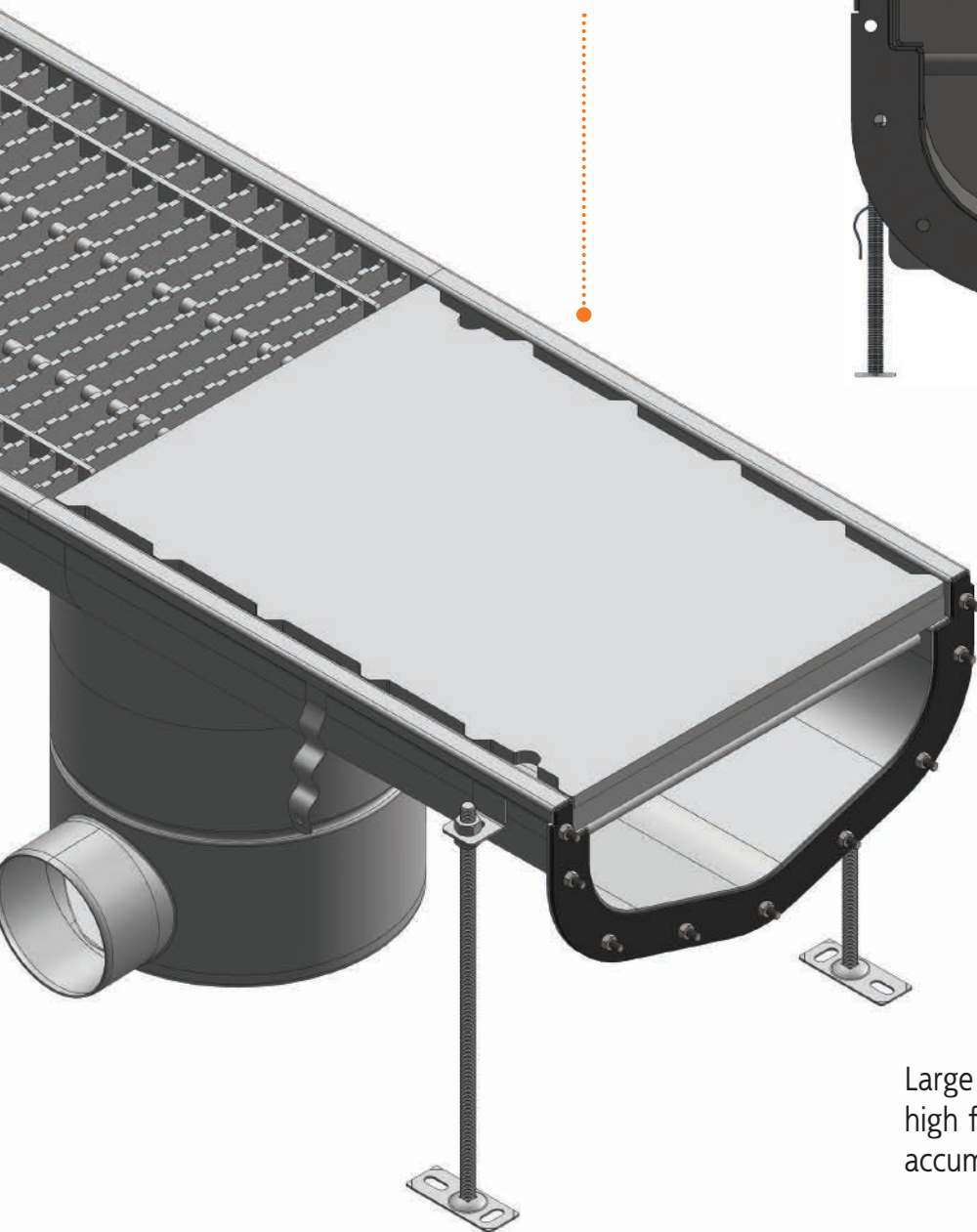
ANTI-SLIP LADDER GRATING



LADDER GRATING



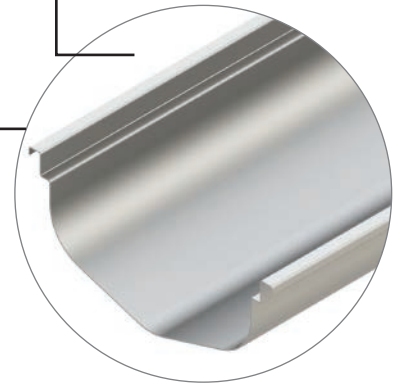
High load class plate grating.



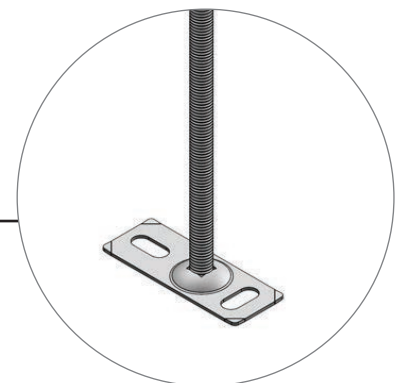
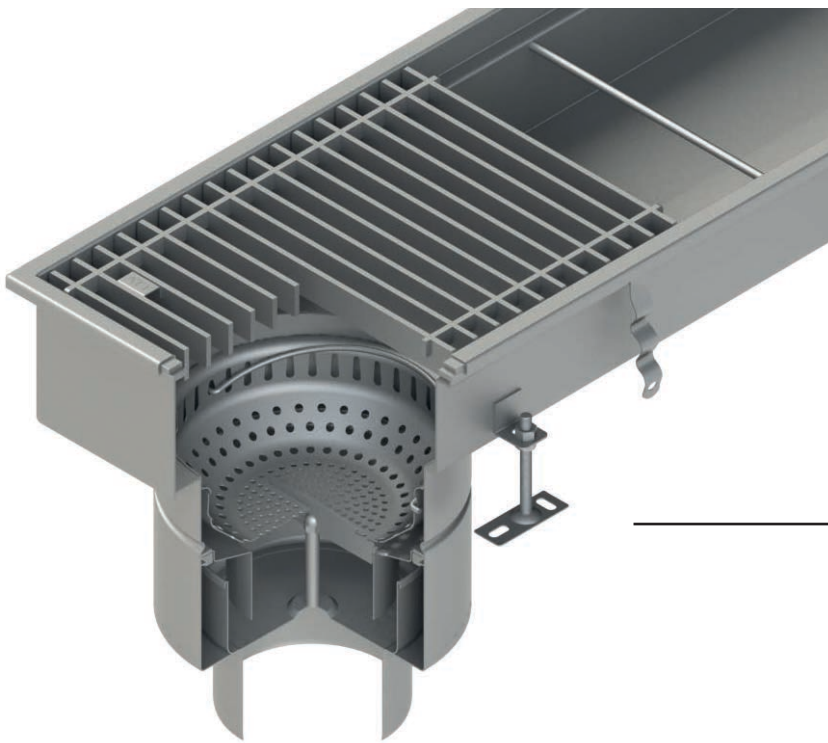
Large radius U-shaped bottom provides high flow rate capacity and prevents from accumulation of contamination.



Continuous welding prevents dirt accumulation.



Folded edges. Rounded or curved bottom.



Levelling feet made of stainless steel.

Waste basket



Deep pressed, without welding, single hygienic element for effective cleaning and removal of solid wastes.

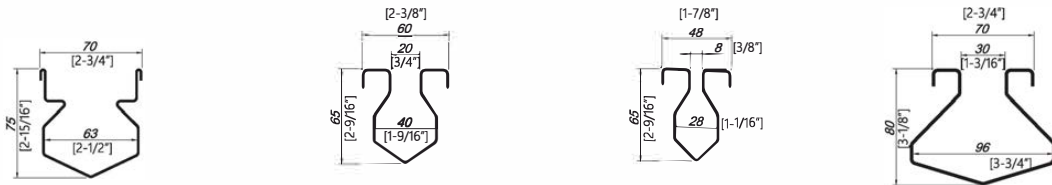
Trap



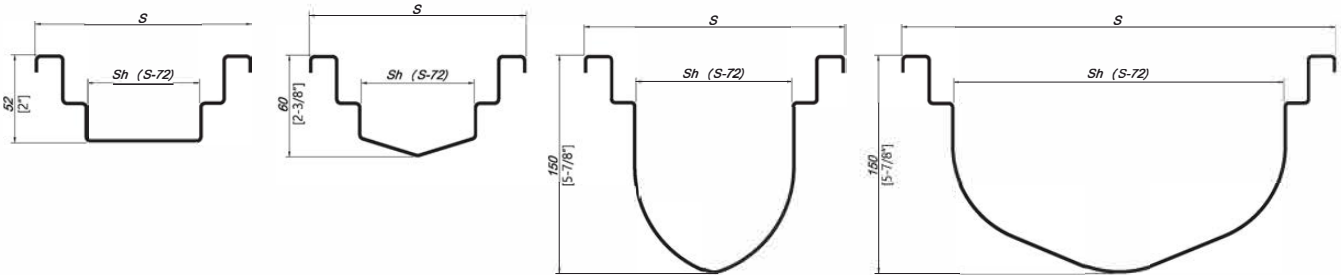
The inverted trap provides maximum protection against odors and bacteria penetration.

** Coordinate with local plumbing code*

MINIMUM HEIGHTS FOR STANDARD AND SLOT CHANNELS



(Sa)-Mini standard channel (Sb)-Slot channel (Sc)-Mini slot channel (Sd)- Maxi slot channel



(KT)-Standard channel with flat bottom (Sv) - Standard channel with v-shaped bottom (Su) - Narrow standard channel with rounded u-shape bottom (Su) - Wide standard channel with rounded u-shape bottom

STANDARD SIZES:

Slot: (Sa)2-3/4", (Sb)3/4", (Sc)3/8", & (Sd)1-3/16"

Trench: Flat (KT) 6", 8", 12", 18", & 24"

V-Shape (Sv): 6", 8", 12", 16", 20", & 24"

U-Shape (Su): 7", 12", 16", & 20"

Lengths: 3'-0", 4'-0", 6'-0", 8'-0", 10'-0", 12'-0", 16'-0", 18'-0", 20'-0", 25'-0" & custom

EDGES FILLING

Standard edge (Epoxy).

Edge filled with synthetic. It facilitates assembly and prevents empty spaces between concrete and the edge, thus protecting the edge of the channel against deformation under heavy loads.

Edge with stainless steel filling. Edges filled with flat bars should be used in areas of high traffic intensity and high utility loads.

Edge with an edge angle section. The angle is connected with the edge of the channel via bars. This type of edge is used to create expansion joint along the standard channel, e.g. at high temperatures of drained liquids.

Edge with a strip for vinyl floors. The strip is installed on the channel edge. It provides a tight plate connection between the channel and a floor covered with vinyl.

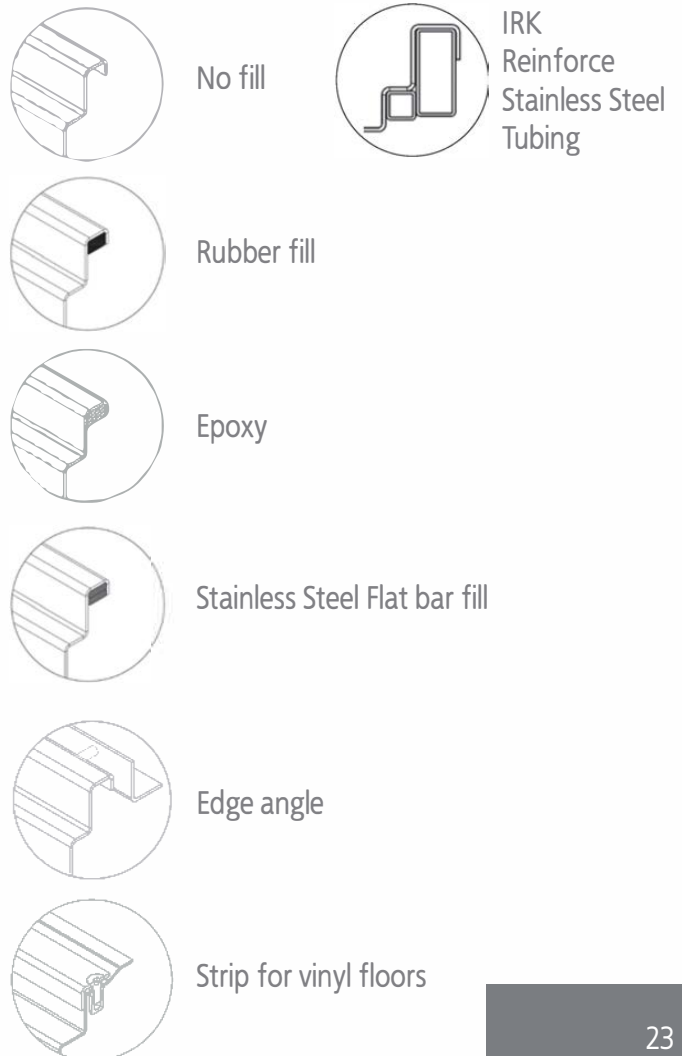
Edge with reinforced stainless steel (IRK) tube. Edges filled with IRK Tubes should be used in areas of high traffic intensity and high utility loads.

QUICK SHIP SIZES:

Slot: (Sb) = 8'-0", 10'-0", & 12'-0"

Trench: V-Shape (Sv) 8" x 3'-0", 4'-0", 6'-0", 8'-0", 10'-0", 12'-0"
V-Shape (Sv) 12" x 8'-0", 10'-0", & 12'-0"

U-Shape (Su) 8" & 12" x 8'-0", 10'-0", & 12'-0"





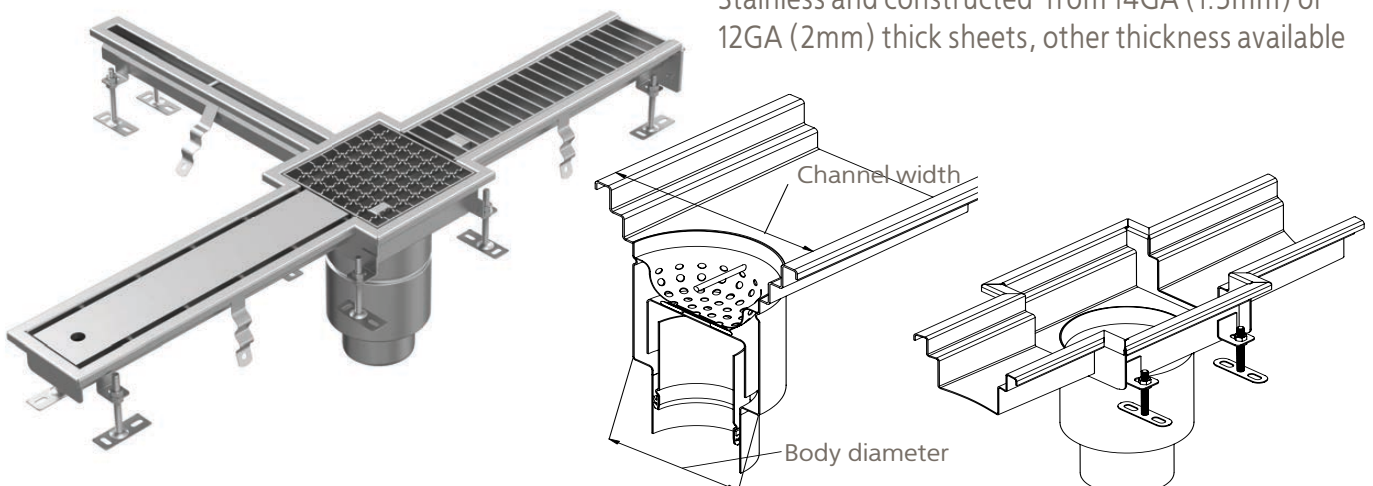
Typical layout of the channel is shown in the figure below. The placement of floor drains and the channel route depends on the needs and the amount of water to be drained from the floor. The two systems we offer, standard and slot channels, can be combined.

The channel route should be decided by the design engineer in cooperation with the process engineer. In case of any technical questions relating

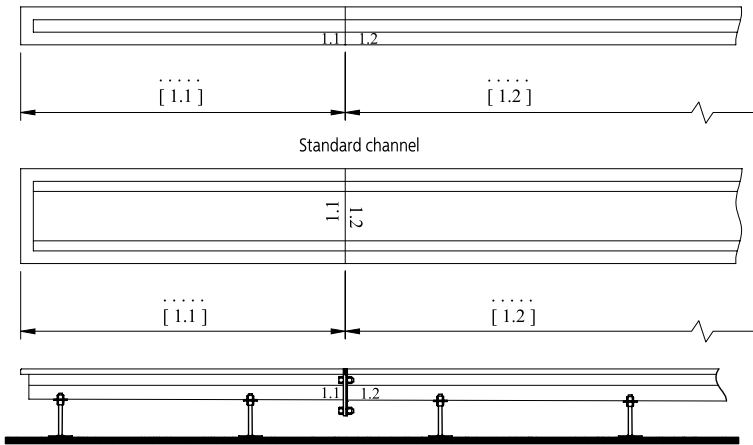
to the drainage system, please do not hesitate to contact our consultants.

The channel outlet is fitted with trap and waste basket, securing the sewage system from solid impurities. We can insert horizontal water-proof insulation into the flange of the floor drain. This solution assures leak tightness in the area of out-flow passage through the floor.

Available in AISI304, AISI316, & AISI316L grade Stainless and constructed from 14GA (1.5mm) or 12GA (2mm) thick sheets, other thickness available

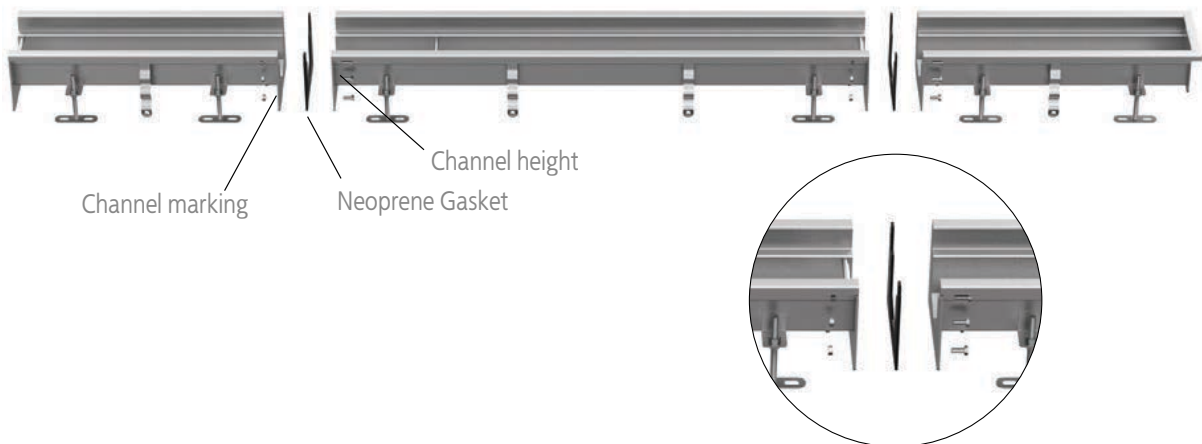
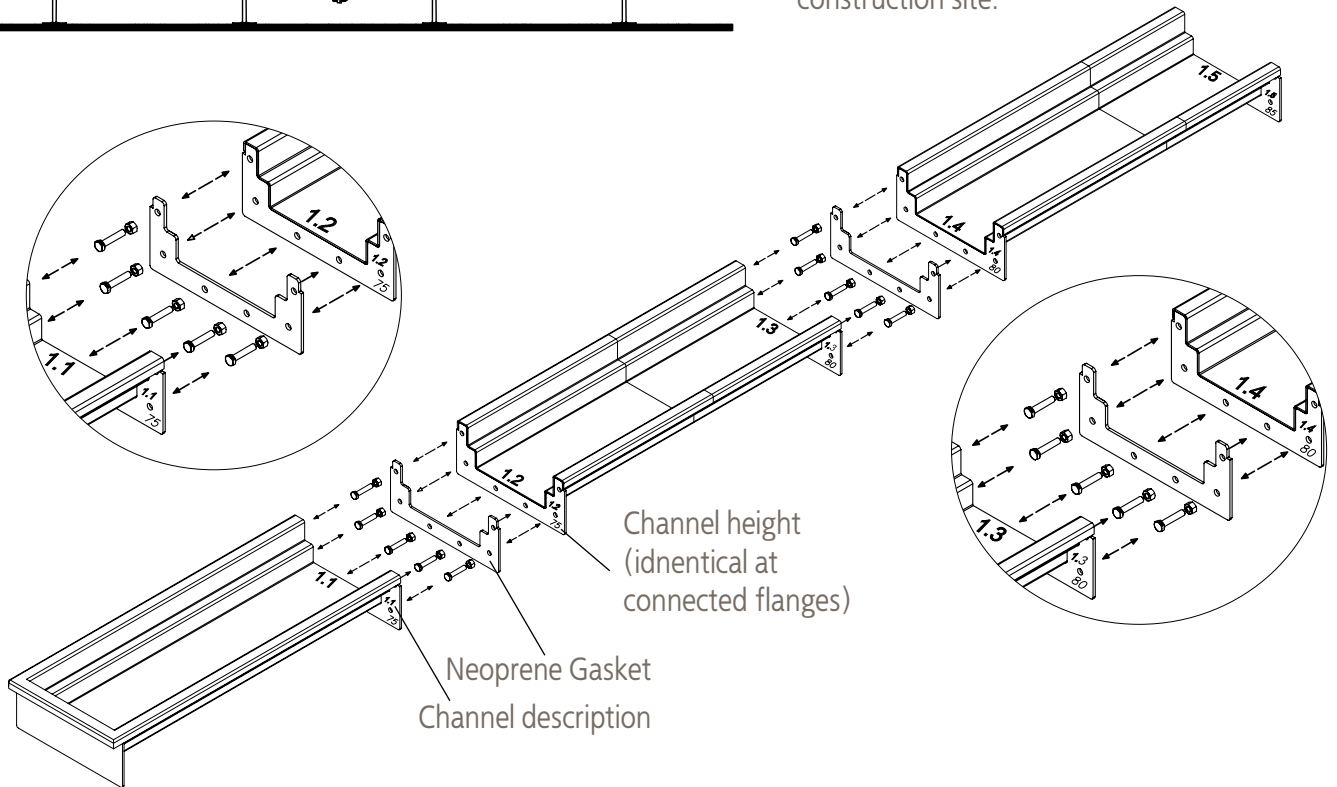


CHANNEL CONNECTION DRAWING



Channels are divided into sections appropriate for transport, as a standard their length does not exceed 10 feet or 3 meters. Length of the sections also depends on manufacturing technology.

At the connection point the channel is approximately 1 in or 25 mm lower, due to the presence of the connection flange. It is also possible to weld the channel directly at the construction site.



V-SHAPE BOTTOM TRENCH DRAINS

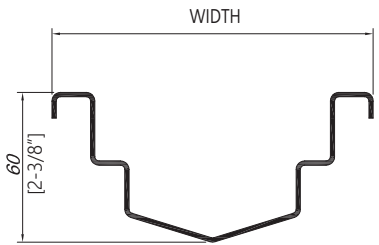
Model Selection: (Model ID)-(Length)-(Pipe Size)-(Grate Style)-(Edge profile)-(Accessories)

Example: S6V1-144"-3-Pp-*EPY-FB

Products are typically constructed from 14GA/ 2mm (12GA/ 3mm available) AISI304 or AISI316L stainless steel. Hygienic certified welds and food-grade passivated corrosion-resistant finish.

Sv6V1: 6" WIDE PRE-SLOPED TRENCH DRAIN WITH "V"-SHAPE BOTTOM & VERTICAL OUTLET

	Model: (USA & Canada)	Model: (International)	Pipe Size:	Dimensions				
				Width	Length	Start Ht	Depth	Outlet
6" WIDE "V" TRENCH	Sv6V1-(Length)-2	S150-60/V1	2"	5-7/8" [150]	Specify	2-3/8" [60]	Varies	2-3/8" [60]
	Sv6V1-(Length)-3	S150-89/V1	3"	5-7/8" [150]	Specify	2-3/8" [60]	Varies	3-1/2" [89]
	Sv6V1-(Length)-4	S150-114/V1	4"	5-7/8" [150]	Specify	2-3/8" [60]	Varies	4-1/2" [114]



Sv6V1: 6" WIDE PRE-SLOPED TRENCH DRAIN WITH "V"-SHAPE BOTTOM & HORIZONTAL OUTLET

	Model: (USA & Canada)	Model: (International)	Pipe Size:	Dimensions				
				Width	Length	Start Ht	Depth	Outlet
6" WIDE "V" TRENCH	Sv6H1-(Length)-2	S150-60/H1	2"	5-7/8" [150]	Specify	2-3/8" [60]	Varies	2-3/8" [60]
	Sv6H1-(Length)-3	S150-89/H1	3"	5-7/8" [150]	Specify	2-3/8" [60]	Varies	3-1/2" [89]
	Sv6H1-(Length)-4	S150-114/H1	4"	5-7/8" [150]	Specify	2-3/8" [60]	Varies	4-1/2" [114]



Sv8V1: 8" WIDE PRE-SLOPED TRENCH DRAIN WITH "V"-SHAPE BOTTOM & VERTICAL OUTLET

	Model: (USA & Canada)	Model: (International)	Pipe Size:	Dimensions				
				Width	Length	Start Ht	Depth	Outlet
8" WIDE "V" TRENCH	Sv8V1-(Length)-3	S200-89/V1	3"	7-7/8" [200]	Specify	2-3/8" [60]	Varies	3-1/2" [89]
	Sv8V1-(Length)-4	S200-114/V1	4"	7-7/8" [200]	Specify	2-3/8" [60]	Varies	4-1/2" [114]
	Sv8V1-(Length)-6	S200-168/V1	6"	7-7/8" [200]	Specify	2-3/8" [60]	Varies	4-1/2" [114]

Sv8V1: 8" WIDE PRE-SLOPED TRENCH DRAIN WITH "V"-SHAPE BOTTOM & HORIZONTAL OUTLET

	Model: (USA & Canada)	Model: (International)	Pipe Size:	Dimensions				
				Width	Length	Start Ht	Depth	Outlet
8" WIDE "V" TRENCH	Sv8H1-(Length)-3	S200-89/H1	3"	7-7/8" [200]	Specify	2-3/8" [60]	Varies	3-1/2" [89]
	Sv8H1-(Length)-4	S200-114/H1	4"	7-7/8" [200]	Specify	2-3/8" [60]	Varies	4-1/2" [114]
	Sv8H1-(Length)-6	S200-168/H1	6"	7-7/8" [200]	Specify	2-3/8" [60]	Varies	6-5/8" [168]

Sv12V1: 12" WIDE PRE-SLOPED TRENCH DRAIN WITH "V"-SHAPE BOTTOM & VERTICAL OUTLET

	Model: (USA & Canada)	Model: (International)	Pipe Size:	Dimensions				
				Width	Length	Start Ht	Depth	Outlet
12" WIDE "V" TRENCH	Sv12V1-(Length)-3	S300-89/V1	3"	11-13/16" [300]	Specify	2-3/8" [60]	Varies	3-1/2" [89]
	Sv12V1-(Length)-4	S300-114/V1	4"	11-13/16" [300]	Specify	2-3/8" [60]	Varies	4-1/2" [114]
	Sv12V1-(Length)-6	S300-168/V1	6"	11-13/16" [300]	Specify	2-3/8" [60]	Varies	6-5/8" [168]



V-SHAPE BOTTOM TRENCH DRAINS

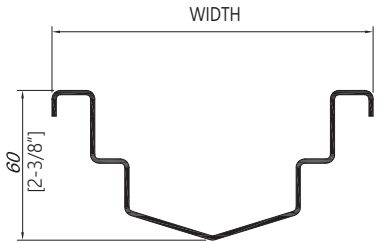
Model Selection: (Model ID)-(Length)-(Pipe Size)-(Grate Style)-*(Edge profile)-(Accessories)

Products are typically constructed from 14GA/ 2mm (12GA/ 3mm available) AISI304 or AISI316L stainless steel. Hygienic certified welds and food-grade passivated corrosion-resistant finish.

Example: S16V1-144"-3-Pp-*EPY-FB

Sv12V1: 12" WIDE PRE-SLOPED TRENCH DRAIN WITH "V"-SHAPE BOTTOM & HORIZONTAL OUTLET

	Model: (USA & Canada)	Model: (International)	Pipe Size:	Dimensions				
				Width	Length	Start Ht	Depth	Outlet
12" WIDE "V" TRENCH	SH12H1-(Length)-3	S300-89/H1	3"	11-13/16" [300]	Specify	2-3/8" [60]	Varies	3-1/2" [89]
	SH12H1-(Length)-4	S300-114/H1	4"	11-13/16" [300]	Specify	2-3/8" [60]	Varies	4-1/2" [114]
	SH12H1-(Length)-6	S300-168/H1	6"	11-13/16" [300]	Specify	2-3/8" [60]	Varies	6-5/8" [168]



Sv16V1: 16" WIDE STAINLESS STEEL TRENCH DRAIN WITH "V"-SHAPE BOTTOM & VERTICAL OUTLET

	Model: (USA & Canada)	Model: (International)	Pipe Size:	Dimensions				
				Width	Length	Start Ht	Depth	Outlet
16" WIDE "V" TRENCH	Sv16V1-(Length)-6	S300-89/V1	3"	15-3/4" [400]	Specify	2-3/8" [60]	Varies	3-1/2" [89]
	Sv16V1-(Length)-3	S300-114/V1	4"	15-3/4" [400]	Specify	2-3/8" [60]	Varies	4-1/2" [114]
	Sv16V1-(Length)-6	S300-168/V1	6"	15-3/4" [400]	Specify	2-3/8" [60]	Varies	6-5/16" [160]



Sv16V1: 16" WIDE STAINLESS STEEL TRENCH DRAIN WITH "V"-SHAPE BOTTOM & HORIZONTAL OUTLET

	Model: (USA & Canada)	Model: (International)	Pipe Size:	Dimensions				
				Width	Length	Start Ht	Depth	Outlet
16" WIDE "V" TRENCH	Sv16H1-(Length)-3	S300-89/H1	3"	15-3/4" [400]	Specify	2-3/8" [60]	Varies	3-1/2" [89]
	Sv16H1-(Length)-4	S300-114/H1	4"	15-3/4" [400]	Specify	2-3/8" [60]	Varies	4-1/2" [114]
	Sv16H1-(Length)-6	S300-168/H1	6"	15-3/4" [400]	Specify	2-3/8" [60]	Varies	6-5/16" [160]



U-SHAPE BOTTOM TRENCH DRAINS

Model Selection: (Model ID)-(Length)-(Pipe Size)-(Grate Style)-(Edge profile)-(Accessories)

Products are typically constructed from 14GA/ 2mm (12GA/ 3mm available) AISI304 or AISI316L stainless steel. Hygienic certified welds and food-grade passivated corrosion-resistant finish.

Example: S6V1-144"-3-Pp-EPY-FB

Su7V1: 7" WIDE PRE-SLOPED TRENCH DRAIN WITH "U"-SHAPE BOTTOM & VERTICAL OUTLET

	Model: (USA & Canada)	Model: (International)	Pipe Size:	Dimensions				
				Width	Length	Start Ht	Depth	Outlet
7" WIDE "U" TRENCH	Su7V1-(Length)-2	S180-60/V1	2"	7-1/16" [180]	Specify	5-7/8" [150]	Varies	2-3/8" [60]
	Su7V1-(Length)-3	S180-89/V1	3"	7-1/16" [180]	Specify	5-7/8" [150]	Varies	3-1/2" [89]
	Su7V1-(Length)-4	S180-114/V1	4"	7-1/16" [180]	Specify	5-7/8" [150]	Varies	4-1/2" [114]

Su7V1: 7" WIDE PRE-SLOPED TRENCH DRAIN WITH "U"-SHAPE BOTTOM & HORIZONTAL OUTLET

	Model: (USA & Canada)	Model: (International)	Pipe Size:	Dimensions				
				Width	Length	Start Ht	Depth	Outlet
7" WIDE "U" TRENCH	Su7H1-(Length)-2	S180-60/H1	2"	7-1/16" [180]	Specify	5-7/8" [150]	Varies	2-3/8" [60]
	Su7H1-(Length)-3	S180-89/H1	3"	7-1/16" [180]	Specify	5-7/8" [150]	Varies	3-1/2" [89]
	Su7H1-(Length)-4	S180-114/H1	4"	7-1/16" [180]	Specify	5-7/8" [150]	Varies	4-1/2" [114]

Su12V1: 12" WIDE PRE-SLOPED TRENCH DRAIN WITH "U"-SHAPE BOTTOM & VERTICAL OUTLET

	Model: (USA & Canada)	Model: (International)	Pipe Size:	Dimensions				
				Width	Length	Start Ht	Depth	Outlet
12" WIDE "U" TRENCH	Su12V1-(Length)-3	S300-89/V1	3"	11-13/16" [300]	Specify	5-7/8" [150]	Varies	3-1/2" [89]
	Su12V1-(Length)-4	S300-114/V1	4"	11-13/16" [300]	Specify	5-7/8" [150]	Varies	4-1/2" [114]
	Su12V1-(Length)-6	S300-168/V1	6"	11-13/16" [300]	Specify	5-7/8" [150]	Varies	6-5/8" [168]

Su12V1: 12" WIDE PRE-SLOPED TRENCH DRAIN WITH "U"-SHAPE BOTTOM & HORIZONTAL OUTLET

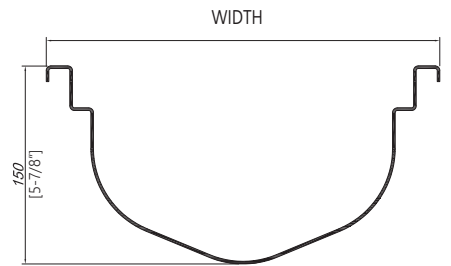
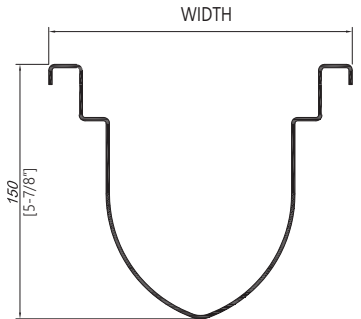
	Model: (USA & Canada)	Model: (International)	Pipe Size:	Dimensions				
				Width	Length	Start Ht	Depth	Outlet
12" WIDE "U" TRENCH	Su12H1-(Length)-3	S300-89/H1	3"	11-13/16" [300]	Specify	5-7/8" [150]	Varies	3-1/2" [89]
	Su12H1-(Length)-4	S300-114/H1	4"	11-13/16" [300]	Specify	5-7/8" [150]	Varies	4-1/2" [114]
	Su12H1-(Length)-6	S300-168/H1	6"	11-13/16" [300]	Specify	5-7/8" [150]	Varies	6-5/8" [168]

Su16V1: 16" WIDE STAINLESS STEEL TRENCH DRAIN WITH "U"-SHAPE BOTTOM & VERTICAL OUTLET

	Model: (USA & Canada)	Model: (International)	Pipe Size:	Dimensions				
				Width	Length	Start Ht	Depth	Outlet
16" WIDE "U" TRENCH	Su16V1-(Length)-6	S400-89/V1	3"	15-3/4" [400]	Specify	2-3/8" [60]	Varies	3-1/2" [89]
	Su16V1-(Length)-3	S400-114/V1	4"	15-3/4" [400]	Specify	2-3/8" [60]	Varies	4-1/2" [114]
	Su16V1-(Length)-6	S400-168/V1	6"	15-3/4" [400]	Specify	2-3/8" [60]	Varies	6-5/16" [160]

Su16V1: 16" WIDE STAINLESS STEEL TRENCH DRAIN WITH "U"-SHAPE BOTTOM & HORIZONTAL OUTLET

	Model: (USA & Canada)	Model: (International)	Pipe Size:	Dimensions				
				Width	Length	Start Ht	Depth	Outlet
16" WIDE "U" TRENCH	Su16H1-(Length)-6	S400-89/H1	3"	15-3/4" [400]	Specify	2-3/8" [60]	Varies	3-1/2" [89]
	Su16H1-(Length)-3	S400-114/H1	4"	15-3/4" [400]	Specify	2-3/8" [60]	Varies	4-1/2" [114]
	Su16H1-(Length)-6	S400-168/H1	6"	15-3/4" [400]	Specify	2-3/8" [60]	Varies	6-5/16" [160]



KITCHEN CHANNEL DRAINS

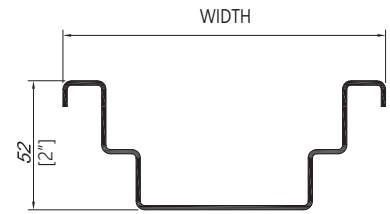
Model Selection: (Model ID)-(Length*)-(Pipe Size)-(Grate Style)-*(Edge profile)-(Accessories)

Example: KTV1-1260"-3-Pp-*EPY-FB

Products are typically constructed from 14GA/ 2mm (12GA/ 3mm available) AISI304 or AISI316L stainless steel. Hygienic certified welds and food-grade passivated corrosion-resistant finish.

KTV1: 12" WIDE KITCHEN CHANNEL DRAIN WITH PRESSED BOTTOM & VERTICAL OUTLET

	Model: (USA & Canada)	Model: (International)	Pipe Size:	Dimensions			
				Width	Length	Start Ht	Outlet
12" X 24" KITCHEN CHANNEL	KTV1-1224-2	S300-[609.6]-60/V1	2"	11-13/16" [300]	24" [609.6]	2" [52]	2-3/8" [60]
	KTV1-1224-3	S300-[609.6]-89/V1	3"	11-13/16" [300]	24" [609.6]	2" [52]	3-1/2" [89]
	KTV1-1224-4	S300-[609.6]-114/V1	4"	11-13/16" [300]	24" [609.6]	2" [52]	4-1/2" [114]
	KTV1-1224-6	S300-[609.6]-168/V1	6"	11-13/16" [300]	24" [609.6]	2" [52]	6-5/8" [168]
12" X 32" KITCHEN CHANNEL	KTV1-1232-2	S300-[812.8]-60/V1	2"	11-13/16" [300]	32" [812.8]	2" [52]	2-3/8" [60]
	KTV1-1232-3	S300-[812.8]-89/V1	3"	11-13/16" [300]	32" [812.8]	2" [52]	3-1/2" [89]
	KTV1-1232-4	S300-[812.8]-114/V1	4"	11-13/16" [300]	32" [812.8]	2" [52]	4-1/2" [114]
	KTV1-1232-6	S300-[812.8]-168/V1	6"	11-13/16" [300]	32" [812.8]	2" [52]	6-5/8" [168]
12" X 36" KITCHEN CHANNEL	KTV1-1236-2	S300-[914.4]-60/V1	2"	11-13/16" [300]	36" [914.4]	2" [52]	2-3/8" [60]
	KTV1-1236-3	S300-[914.4]-89/V1	3"	11-13/16" [300]	36" [914.4]	2" [52]	3-1/2" [89]
	KTV1-1236-4	S300-[914.4]-114/V1	4"	11-13/16" [300]	36" [914.4]	2" [52]	4-1/2" [114]
	KTV1-1236-6	S300-[914.4]-168/V1	6"	11-13/16" [300]	36" [914.4]	2" [52]	6-5/8" [168]
12" X 42" KITCHEN CHANNEL	KTV1-1242-2	S300-[1066.8]-60/V1	2"	11-13/16" [300]	42" [1066.8]	2" [52]	2-3/8" [60]
	KTV1-1242-3	S300-[1066.8]-89/V1	3"	11-13/16" [300]	42" [1066.8]	2" [52]	3-1/2" [89]
	KTV1-1242-4	S300-[1066.8]-114/V1	4"	11-13/16" [300]	42" [1066.8]	2" [52]	4-1/2" [114]
	KTV1-1242-6	S300-[1066.8]-168/V1	6"	11-13/16" [300]	42" [1066.8]	2" [52]	6-5/8" [168]
12" X 48" KITCHEN CHANNEL	KTV1-1248-2	S300-[1219.2]-60/V1	2"	11-13/16" [300]	48" [1219.2]	2" [52]	2-3/8" [60]
	KTV1-1248-3	S300-[1219.2]-89/V1	3"	11-13/16" [300]	48" [1219.2]	2" [52]	3-1/2" [89]
	KTV1-1248-4	S300-[1219.2]-114/V1	4"	11-13/16" [300]	48" [1219.2]	2" [52]	4-1/2" [114]
	KTV1-1248-6	S300-[1219.2]-168/V1	6"	11-13/16" [300]	48" [1219.2]	2" [52]	6-5/8" [168]
12" X 60" KITCHEN CHANNEL	KTV1-1260-2	S300-[1524.0]-60/V1	2"	11-13/16" [300]	60" [1524.0]	2" [52]	2-3/8" [60]
	KTV1-1260-3	S300-[1524.0]-89/V1	3"	11-13/16" [300]	60" [1524.0]	2" [52]	3-1/2" [89]
	KTV1-1260-4	S300-[1524.0]-114/V1	4"	11-13/16" [300]	60" [1524.0]	2" [52]	4-1/2" [114]
	KTV1-1260-6	S300-[1524.0]-168/V1	6"	11-13/16" [300]	60" [1524.0]	2" [52]	6-5/8" [168]
12" X 72" KITCHEN CHANNEL	KTV1-1272-2	S300-[1828.8]-60/V1	2"	11-13/16" [300]	72" [1828.8]	2" [52]	2-3/8" [60]
	KTV1-1272-3	S300-[1828.8]-89/V1	3"	11-13/16" [300]	72" [1828.8]	2" [52]	3-1/2" [89]
	KTV1-1272-4	S300-[1828.8]-114/V1	4"	11-13/16" [300]	72" [1828.8]	2" [52]	4-1/2" [114]
	KTV1-1272-6	S300-[1828.8]-168/V1	6"	11-13/16" [300]	72" [1828.8]	2" [52]	6-5/8" [168]



KITCHEN CHANNEL DRAINS

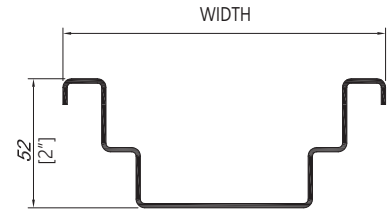
Model Selection: (Model ID)-(Length)-(Pipe Size)-(Grate Style)-*(Edge profile)-(Accessories)

Example: KTV1-1260"-3-Pp-*EPY-FB

Products are typically constructed from 14GA/ 2mm (12GA/ 3mm available) AISI304 or AISI316L stainless steel. Hygienic certified welds and food-grade passivated corrosion-resistant finish.

KTV1: 12" WIDE KITCHEN CHANNEL DRAIN WITH PRESSED BOTTOM & VERTICAL OUTLET

	Model: (USA & Canada)	Model: (International)	Pipe Size:	Dimensions			
				Width	Length	Start Ht	Outlet
12" X 84" KITCHEN CHANNEL	KTV1-1284-2	S300-[2133.6]-60/V1	2"	11-13/16" [300]	84" [2133.6]	2" [52]	2-3/8" [60]
	KTV1-1284-3	S300-[2133.6]-89/V1	3"	11-13/16" [300]	84" [2133.6]	2" [52]	3-1/2" [89]
	KTV1-1284-4	S300-[2133.6]-114/V1	4"	11-13/16" [300]	84" [2133.6]	2" [52]	4-1/2" [114]
	KTV1-1284-6	S300-[2133.6]-168/V1	6"	11-13/16" [300]	84" [2133.6]	2" [52]	6-5/8" [168]
12" X 96" KITCHEN CHANNEL	KTV1-1296-2	S300-[2438.4]-60/V1	2"	11-13/16" [300]	96" [2438.4]	2" [52]	2-3/8" [60]
	KTV1-1296-3	S300-[2438.4]-89/V1	3"	11-13/16" [300]	96" [2438.4]	2" [52]	3-1/2" [89]
	KTV1-1296-4	S300-[2438.4]-114/V1	4"	11-13/16" [300]	96" [2438.4]	2" [52]	4-1/2" [114]
	KTV1-1296-6	S300-[2438.4]-168/V1	6"	11-13/16" [300]	96" [2438.4]	2" [52]	6-5/8" [168]
12" X 108" KITCHEN CHANNEL	KTV1-12108-2	S300-[2743.2]-60/V1	2"	11-13/16" [300]	108" [2743.2]	2" [52]	2-3/8" [60]
	KTV1-12108-3	S300-[2743.2]-89/V1	3"	11-13/16" [300]	108" [2743.2]	2" [52]	3-1/2" [89]
	KTV1-12108-4	S300-[2743.2]-114/V1	4"	11-13/16" [300]	108" [2743.2]	2" [52]	4-1/2" [114]
	KTV1-12108-6	S300-[2743.2]-168/V1	6"	11-13/16" [300]	108" [2743.2]	2" [52]	6-5/8" [168]
12" X 120" KITCHEN CHANNEL	KTV1-12120-2	S300-[3048.0]-60/V1	2"	11-13/16" [300]	120" [3048.0]	2" [52]	2-3/8" [60]
	KTV1-12120-3	S300-[3048.0]-89/V1	3"	11-13/16" [300]	120" [3048.0]	2" [52]	3-1/2" [89]
	KTV1-12120-4	S300-[3048.0]-114/V1	4"	11-13/16" [300]	120" [3048.0]	2" [52]	4-1/2" [114]
	KTV1-12120-6	S300-[3048.0]-168/V1	6"	11-13/16" [300]	120" [3048.0]	2" [52]	6-5/8" [168]



KTV1: 18" WIDE KITCHEN CHANNEL DRAIN WITH PRESSED BOTTOM & VERTICAL OUTLET

	Model: (USA & Canada)	Model: (International)	Pipe Size:	Dimensions			
				Width	Length	Start Ht	Outlet
18" X 24" KITCHEN CHANNEL	KTV1-1824-2	S450-[609.6]-60/V1	2"	17-3/4" [450]	24" [609.6]	2" [52]	2-3/8" [60]
	KTV1-1824-3	S450-[609.6]-89/V1	3"	17-3/4" [450]	24" [609.6]	2" [52]	3-1/2" [89]
	KTV1-1824-4	S450-[609.6]-114/V1	4"	17-3/4" [450]	24" [609.6]	2" [52]	4-1/2" [114]
	KTV1-1824-6	S450-[609.6]-168/V1	6"	17-3/4" [450]	24" [609.6]	2" [52]	6-5/8" [168]
18" X 32" KITCHEN CHANNEL	KTV1-1832-2	S450-[812.8]-60/V1	2"	17-3/4" [450]	32" [812.8]	2" [52]	2-3/8" [60]
	KTV1-1832-3	S450-[812.8]-89/V1	3"	17-3/4" [450]	32" [812.8]	2" [52]	3-1/2" [89]
	KTV1-1832-4	S450-[812.8]-114/V1	4"	17-3/4" [450]	32" [812.8]	2" [52]	4-1/2" [114]
	KTV1-1832-6	S450-[812.8]-168/V1	6"	17-3/4" [450]	32" [812.8]	2" [52]	6-5/8" [168]



KITCHEN CHANNEL DRAINS

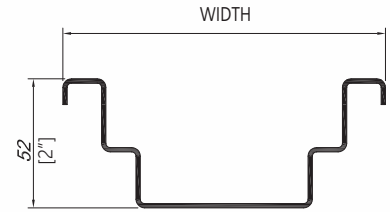
Model Selection: (Model ID)-(Length)-(Pipe Size)-(Grate Style)-*(Edge profile)-(Accessories)

Example: KTV1-1260"-3-Pp-*EPY-FB

Products are typically constructed from 14GA/ 2mm (12GA/ 3mm available) AISI304 or AISI316L stainless steel. Hygienic certified welds and food-grade passivated corrosion-resistant finish.

KTV1: 18" WIDE KITCHEN CHANNEL DRAIN WITH PRESSED BOTTOM & VERTICAL OUTLET

	Model: (USA & Canada)	Model: (International)	Pipe Size:	Dimensions			
				Width	Length	Start Ht	Outlet
18" X 36" KITCHEN CHANNEL	KTV1-1836-2	S450-[914.4]-60/V1	2"	17-3/4" [450]	36" [914.4]	2" [52]	2-3/8" [60]
	KTV1-1836-3	S450-[914.4]-89/V1	3"	17-3/4" [450]	36" [914.4]	2" [52]	3-1/2" [89]
	KTV1-1836-4	S450-[914.4]-114/V1	4"	17-3/4" [450]	36" [914.4]	2" [52]	4-1/2" [114]
	KTV1-1836-6	S450-[914.4]-168/V1	6"	17-3/4" [450]	36" [914.4]	2" [52]	6-5/8" [168]
18" X 42" KITCHEN CHANNEL	KTV1-1842-2	S450-[1066.8]-60/V1	2"	17-3/4" [450]	42" [1066.8]	2" [52]	2-3/8" [60]
	KTV1-1842-3	S450-[1066.8]-89/V1	3"	17-3/4" [450]	42" [1066.8]	2" [52]	3-1/2" [89]
	KTV1-1842-4	S450-[1066.8]-114/V1	4"	17-3/4" [450]	42" [1066.8]	2" [52]	4-1/2" [114]
	KTV1-1842-6	S450-[1066.8]-168/V1	6"	17-3/4" [450]	42" [1066.8]	2" [52]	6-5/8" [168]
18" X 48" KITCHEN CHANNEL	KTV1-1848-2	S450-[1219.2]-60/V1	2"	17-3/4" [450]	48" [1219.2]	2" [52]	2-3/8" [60]
	KTV1-1848-3	S450-[1219.2]-89/V1	3"	17-3/4" [450]	48" [1219.2]	2" [52]	3-1/2" [89]
	KTV1-1848-4	S450-[1219.2]-114/V1	4"	17-3/4" [450]	48" [1219.2]	2" [52]	4-1/2" [114]
	KTV1-1848-6	S450-[1219.2]-168/V1	6"	17-3/4" [450]	48" [1219.2]	2" [52]	6-5/8" [168]
18" X 60" KITCHEN CHANNEL	KTV1-1860-2	S450-[1524.0]-60/V1	2"	17-3/4" [450]	60" [1524.0]	2" [52]	2-3/8" [60]
	KTV1-1860-3	S450-[1524.0]-89/V1	3"	17-3/4" [450]	60" [1524.0]	2" [52]	3-1/2" [89]
	KTV1-1860-4	S450-[1524.0]-114/V1	4"	17-3/4" [450]	60" [1524.0]	2" [52]	4-1/2" [114]
	KTV1-1860-6	S450-[1524.0]-168/V1	6"	17-3/4" [450]	60" [1524.0]	2" [52]	6-5/8" [168]
18" X 72" KITCHEN CHANNEL	KTV1-1872-2	S450-[1828.8]-60/V1	2"	17-3/4" [450]	72" [1828.8]	2" [52]	2-3/8" [60]
	KTV1-1872-3	S450-[1828.8]-89/V1	3"	17-3/4" [450]	72" [1828.8]	2" [52]	3-1/2" [89]
	KTV1-1872-4	S450-[1828.8]-114/V1	4"	17-3/4" [450]	72" [1828.8]	2" [52]	4-1/2" [114]
	KTV1-1872-6	S450-[1828.8]-168/V1	6"	17-3/4" [450]	72" [1828.8]	2" [52]	6-5/8" [168]
18" X 84" KITCHEN CHANNEL	KTV1-1884-2	S450-[2133.6]-60/V1	2"	17-3/4" [450]	84" [2133.6]	2" [52]	2-3/8" [60]
	KTV1-1884-3	S450-[2133.6]-89/V1	3"	17-3/4" [450]	84" [2133.6]	2" [52]	3-1/2" [89]
	KTV1-1884-4	S450-[2133.6]-114/V1	4"	17-3/4" [450]	84" [2133.6]	2" [52]	4-1/2" [114]
	KTV1-1884-6	S450-[2133.6]-168/V1	6"	17-3/4" [450]	84" [2133.6]	2" [52]	6-5/8" [168]
18" X 96" KITCHEN CHANNEL	KTV1-1896-2	S450-[2438.4]-60/V1	2"	17-3/4" [450]	96" [2438.4]	2" [52]	2-3/8" [60]
	KTV1-1896-3	S450-[2438.4]-89/V1	3"	17-3/4" [450]	96" [2438.4]	2" [52]	3-1/2" [89]
	KTV1-1896-4	S450-[2438.4]-114/V1	4"	17-3/4" [450]	96" [2438.4]	2" [52]	4-1/2" [114]
	KTV1-1896-6	S450-[2438.4]-168/V1	6"	17-3/4" [450]	96" [2438.4]	2" [52]	6-5/8" [168]



KITCHEN CHANNEL DRAINS

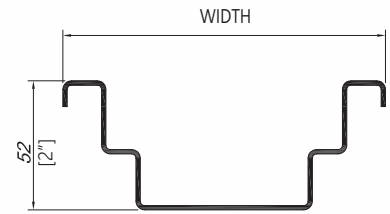
Model Selection: (Model ID)-(Length)-(Pipe Size)-(Grate Style)-(Edge profile)-(Accessories)

Example: KTV1-1260"-3-Pp-*EPY-FB

Products are typically constructed from 14GA/ 2mm (12GA/ 3mm available) AISI304 or AISI316L stainless steel. Hygienic certified welds and food-grade passivated corrosion-resistant finish.

KTV1: 18" WIDE KITCHEN CHANNEL DRAIN WITH PRESSED BOTTOM & VERTICAL OUTLET

	Model: (USA & Canada)	Model: (International)	Pipe Size:	Dimensions			
				Width	Length	Start Ht	Outlet
18" X 36" KITCHEN CHANNEL	KTV1-1836-2	S450-[914.4]-60/V1	2"	17-3/4" [450]	36" [914.4]	2" [52]	2-3/8" [60]
	KTV1-1836-3	S450-[914.4]-89/V1	3"	17-3/4" [450]	36" [914.4]	2" [52]	3-1/2" [89]
	KTV1-1836-4	S450-[914.4]-114/V1	4"	17-3/4" [450]	36" [914.4]	2" [52]	4-1/2" [114]
	KTV1-1836-6	S450-[914.4]-168/V1	6"	17-3/4" [450]	36" [914.4]	2" [52]	6-5/8" [168]
18" X 42" KITCHEN CHANNEL	KTV1-1842-2	S450-[1066.8]-60/V1	2"	17-3/4" [450]	42" [1066.8]	2" [52]	2-3/8" [60]
	KTV1-1842-3	S450-[1066.8]-89/V1	3"	17-3/4" [450]	42" [1066.8]	2" [52]	3-1/2" [89]
	KTV1-1842-4	S450-[1066.8]-114/V1	4"	17-3/4" [450]	42" [1066.8]	2" [52]	4-1/2" [114]
	KTV1-1842-6	S450-[1066.8]-168/V1	6"	17-3/4" [450]	42" [1066.8]	2" [52]	6-5/8" [168]
18" X 48" KITCHEN CHANNEL	KTV1-1848-2	S450-[1219.2]-60/V1	2"	17-3/4" [450]	48" [1219.2]	2" [52]	2-3/8" [60]
	KTV1-1848-3	S450-[1219.2]-89/V1	3"	17-3/4" [450]	48" [1219.2]	2" [52]	3-1/2" [89]
	KTV1-1848-4	S450-[1219.2]-114/V1	4"	17-3/4" [450]	48" [1219.2]	2" [52]	4-1/2" [114]
	KTV1-1848-6	S450-[1219.2]-168/V1	6"	17-3/4" [450]	48" [1219.2]	2" [52]	6-5/8" [168]
18" X 60" KITCHEN CHANNEL	KTV1-1860-2	S450-[1524.0]-60/V1	2"	17-3/4" [450]	60" [1524.0]	2" [52]	2-3/8" [60]
	KTV1-1860-3	S450-[1524.0]-89/V1	3"	17-3/4" [450]	60" [1524.0]	2" [52]	3-1/2" [89]
	KTV1-1860-4	S450-[1524.0]-114/V1	4"	17-3/4" [450]	60" [1524.0]	2" [52]	4-1/2" [114]
	KTV1-1860-6	S450-[1524.0]-168/V1	6"	17-3/4" [450]	60" [1524.0]	2" [52]	6-5/8" [168]
18" X 72" KITCHEN CHANNEL	KTV1-1872-2	S450-[1828.8]-60/V1	2"	17-3/4" [450]	72" [1828.8]	2" [52]	2-3/8" [60]
	KTV1-1872-3	S450-[1828.8]-89/V1	3"	17-3/4" [450]	72" [1828.8]	2" [52]	3-1/2" [89]
	KTV1-1872-4	S450-[1828.8]-114/V1	4"	17-3/4" [450]	72" [1828.8]	2" [52]	4-1/2" [114]
	KTV1-1872-6	S450-[1828.8]-168/V1	6"	17-3/4" [450]	72" [1828.8]	2" [52]	6-5/8" [168]
18" X 84" KITCHEN CHANNEL	KTV1-1884-2	S450-[2133.6]-60/V1	2"	17-3/4" [450]	84" [2133.6]	2" [52]	2-3/8" [60]
	KTV1-1884-3	S450-[2133.6]-89/V1	3"	17-3/4" [450]	84" [2133.6]	2" [52]	3-1/2" [89]
	KTV1-1884-4	S450-[2133.6]-114/V1	4"	17-3/4" [450]	84" [2133.6]	2" [52]	4-1/2" [114]
	KTV1-1884-6	S450-[2133.6]-168/V1	6"	17-3/4" [450]	84" [2133.6]	2" [52]	6-5/8" [168]
18" X 96" KITCHEN CHANNEL	KTV1-1896-2	S450-[2438.4]-60/V1	2"	17-3/4" [450]	96" [2438.4]	2" [52]	2-3/8" [60]
	KTV1-1896-3	S450-[2438.4]-89/V1	3"	17-3/4" [450]	96" [2438.4]	2" [52]	3-1/2" [89]
	KTV1-1896-4	S450-[2438.4]-114/V1	4"	17-3/4" [450]	96" [2438.4]	2" [52]	4-1/2" [114]
	KTV1-1896-6	S450-[2438.4]-168/V1	6"	17-3/4" [450]	96" [2438.4]	2" [52]	6-5/8" [168]



KITCHEN CHANNEL DRAINS

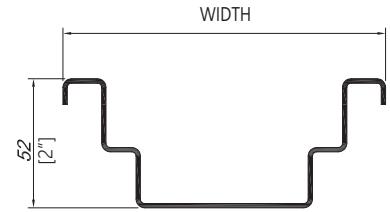
Model Selection: (Model ID)-(Length)-(Pipe Size)-(Grate Style)-(Edge profile)-(Accessories)

Example: KTV1-1260"-3-Pp-*EPY-FB

Products are typically constructed from 14GA/ 2mm (12GA/ 3mm available) AISI304 or AISI316L stainless steel. Hygienic certified welds and food-grade passivated

KTV1: 24" WIDE KITCHEN CHANNEL DRAIN WITH PRESSED BOTTOM & VERTICAL OUTLET

	Model: (USA & Canada)	Model: (International)	Pipe Size:	Dimensions			
				Width	Length	Start Ht	Outlet
24" X 60" KITCHEN CHANNEL	KTV1-2460-2	S600-[1524.0]-60/V1	2"	23-5/8" [600]	60" [1524.0]	2" [52]	2-3/8" [60]
	KTV1-2460-3	S600-[1524.0]-89/V1	3"	23-5/8" [600]	60" [1524.0]	2" [52]	3-1/2" [89]
	KTV1-2460-4	S600-[1524.0]-114/V1	4"	23-5/8" [600]	60" [1524.0]	2" [52]	4-1/2" [114]
	KTV1-2460-6	S600-[1524.0]-168/V1	6"	23-5/8" [600]	60" [1524.0]	2" [52]	6-5/8" [168]
24" X 72" KITCHEN CHANNEL	KTV1-2472-2	S600-[1828.8]-60/V1	2"	23-5/8" [600]	72" [1828.8]	2" [52]	2-3/8" [60]
	KTV1-2472-3	S600-[1828.8]-89/V1	3"	23-5/8" [600]	72" [1828.8]	2" [52]	3-1/2" [89]
	KTV1-2472-4	S600-[1828.8]-114/V1	4"	23-5/8" [600]	72" [1828.8]	2" [52]	4-1/2" [114]
	KTV1-2472-6	S600-[1828.8]-168/V1	6"	23-5/8" [600]	72" [1828.8]	2" [52]	6-5/8" [168]
24" X 84" KITCHEN CHANNEL	KTV1-2484-2	S600-[2133.6]-60/V1	2"	23-5/8" [600]	84" [2133.6]	2" [52]	2-3/8" [60]
	KTV1-2484-3	S600-[2133.6]-89/V1	3"	23-5/8" [600]	84" [2133.6]	2" [52]	3-1/2" [89]
	KTV1-2484-4	S600-[2133.6]-114/V1	4"	23-5/8" [600]	84" [2133.6]	2" [52]	4-1/2" [114]
	KTV1-2484-6	S600-[2133.6]-168/V1	6"	23-5/8" [600]	84" [2133.6]	2" [52]	6-5/8" [168]
24" X 96" KITCHEN CHANNEL	KTV1-2496-2	S600-[2438.4]-60/V1	2"	23-5/8" [600]	96" [2438.4]	2" [52]	2-3/8" [60]
	KTV1-2496-3	S600-[2438.4]-89/V1	3"	23-5/8" [600]	96" [2438.4]	2" [52]	3-1/2" [89]
	KTV1-2496-4	S600-[2438.4]-114/V1	4"	23-5/8" [600]	96" [2438.4]	2" [52]	4-1/2" [114]
	KTV1-2496-6	S600-[2438.4]-168/V1	6"	23-5/8" [600]	96" [2438.4]	2" [52]	6-5/8" [168]
24" X 108" KITCHEN CHANNEL	KTV1-24108-2	S600-[2743.2]-60/V1	2"	23-5/8" [600]	108" [2743.2]	2" [52]	2-3/8" [60]
	KTV1-24108-3	S600-[2743.2]-89/V1	3"	23-5/8" [600]	108" [2743.2]	2" [52]	3-1/2" [89]
	KTV1-24108-4	S600-[2743.2]-114/V1	4"	23-5/8" [600]	108" [2743.2]	2" [52]	4-1/2" [114]
	KTV1-24108-6	S600-[2743.2]-168/V1	6"	23-5/8" [600]	108" [2743.2]	2" [52]	6-5/8" [168]
24" X 120" KITCHEN CHANNEL	KTV1-24120-2	S600-[3048.0]-60/V1	2"	23-5/8" [600]	120" [3048.0]	2" [52]	2-3/8" [60]
	KTV1-24120-3	S600-[3048.0]-89/V1	3"	23-5/8" [600]	120" [3048.0]	2" [52]	3-1/2" [89]
	KTV1-24120-4	S600-[3048.0]-114/V1	4"	23-5/8" [600]	120" [3048.0]	2" [52]	4-1/2" [114]
	KTV1-24120-6	S600-[3048.0]-168/V1	6"	23-5/8" [600]	120" [3048.0]	2" [52]	6-5/8" [168]



SLOT DRAINS

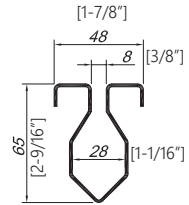
Model Selection: (Model ID)-(Length)-(Pipe Size)-(Grate Style)-*(Edge profile)-(Accessories)

Example: ScV1-144"-3-Pp-*EPY-FB

Products are typically constructed from 14GA/ 2mm (12GA/ 3mm available) AISI304 or AISI316L stainless steel. Hygienic certified welds and food-grade passivated corrosion-resistant finish.

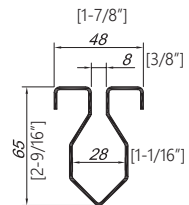
ScV1: 3/8" PRE-SLOPED STAINLESS STEEL SLOT DRAIN WITH VERTICAL OUTLET

	Model: (USA & Canada)	Model: (International)	Pipe Size:	Dimensions				
				Width	Length	Start Ht	Depth	Outlet
3/8" SLOT DRAIN	ScV1-(Length)-2	S48-W200-60/V1	2"	1-7/8" [48]	Specify	2-9/16" [65]	Varies	2-3/8" [60]
	ScV1-(Length)-3	S48-W200-89/V1	3"	1-7/8" [48]	Specify	2-9/16" [65]	Varies	3-1/2" [89]
	ScV1-(Length)-4	S48-W200-114/V1	4"	1-7/8" [48]	Specify	2-9/16" [65]	Varies	4-1/2" [114]
	ScV1-(Length)-6	S48-W200-168/V1	6"	1-7/8" [48]	Specify	2-9/16" [65]	Varies	6-5/8" [168]



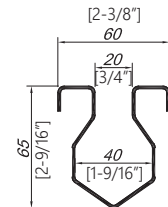
ScH1: 3/8" PRE-SLOPED STAINLESS STEEL SLOT DRAIN WITH HORIZONTAL OUTLET

	Model: (USA & Canada)	Model: (International)	Pipe Size:	Dimensions				
				Width	Length	Start Ht	Depth	Outlet
3/8" SLOT DRAIN	ScH1-(Length)-2	S48-W200-60/H1	2"	1-7/8" [48]	Specify	2-9/16" [65]	Varies	2-3/8" [60]
	ScH1-(Length)-3	S48-W200-89/H1	3"	1-7/8" [48]	Specify	2-9/16" [65]	Varies	3-1/2" [89]
	ScH1-(Length)-4	S48-W200-114/H1	4"	1-7/8" [48]	Specify	2-9/16" [65]	Varies	4-1/2" [114]
	ScH1-(Length)-6	S48-W200-168/H1	6"	1-7/8" [48]	Specify	2-9/16" [65]	Varies	6-5/8" [168]



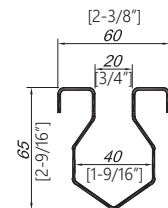
SbV1: 3/4" PRE-SLOPED STAINLESS STEEL SLOT DRAIN WITH VERTICAL OUTLET

	Model: (USA & Canada)	Model: (International)	Pipe Size:	Dimensions				
				Width	Length	Start Ht	Depth	Outlet
3/4" SLOT DRAIN	SbV1-(Length)-2	S60-W200-60/V1	2"	2-3/8" [60]	Specify	2-9/16" [65]	Varies	2-3/8" [60]
	SbV1-(Length)-3	S60-W200-89/V1	3"	2-3/8" [60]	Specify	2-9/16" [65]	Varies	3-3/8" [85]
	SbV1-(Length)-4	S60-W200-114/V1	4"	2-3/8" [60]	Specify	2-9/16" [65]	Varies	4-1/2" [114]
	SbV1-(Length)-6	S60-W200-168/V1	6"	2-3/8" [60]	Specify	2-9/16" [65]	Varies	6-5/8" [168]



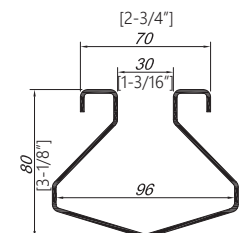
SbH1: 3/4" PRE-SLOPED STAINLESS STEEL SLOT DRAIN WITH HORIZONTAL OUTLET

	Model: (USA & Canada)	Model: (International)	Pipe Size:	Dimensions				
				Width	Length	Start Ht	Depth	Outlet
3/4" SLOT DRAIN	SbH1-(Length)-2	S60-W200-60/H1	2"	2-3/8" [60]	Specify	2-9/16" [65]	Varies	2-3/8" [60]
	SbH1-(Length)-3	S60-W200-89/H1	3"	2-3/8" [60]	Specify	2-9/16" [65]	Varies	3-3/8" [85]
	SbH1-(Length)-4	S60-W200-114/H1	4"	2-3/8" [60]	Specify	2-9/16" [65]	Varies	4-1/2" [114]
	SbH1-(Length)-6	S60-W200-168/H1	6"	2-3/8" [60]	Specify	2-9/16" [65]	Varies	6-5/8" [168]



SdV1-Maxi: 1-3/16" PRE-SLOPED STAINLESS STEEL SLOT DRAIN WITH VERTICAL OUTLET

	Model: (USA & Canada)	Model: (International)	Pipe Size:	Dimensions				
				Width	Length	Start Ht	Depth	Outlet
Maxi: 1-3/16" SLOT DRAIN	SdV1-(Length)-2	S70-W200-60/V1	2"	2-3/4" [70]	Specify	3-1/8" [80]	Varies	3-3/8" [85]
	SdV1-(Length)-3	S70-W200-89/V1	3"	2-3/4" [70]	Specify	3-1/8" [80]	Varies	4-1/2" [114]
	SdV1-(Length)-4	S70-W200-114/V1	4"	2-3/4" [70]	Specify	3-1/8" [80]	Varies	6-5/16" [160]
	SdV1-(Length)-6	S70-W200-168/V1	6"	2-3/4" [70]	Specify	3-1/8" [80]	Varies	6-5/16" [160]



SLOT DRAINS

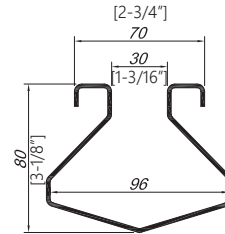
Model Selection: (Model ID)-(Length)-(Pipe Size)-(Grate Style)-*(Edge profile)-(Accessories)

Products are typically constructed from 14GA/ 2mm (12GA/ 3mm available) AISI304 or AISI316L stainless steel. Hygienic certified welds and food-grade passivated corrosion-resistant finish.

Example: SdV1-144"-3-Pp-*EPY-FB

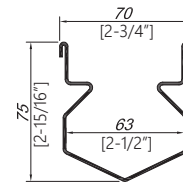
SdH1 -Maxi: 1-3/16" PRE-SLOPED STAINLESS STEEL SLOT DRAIN WITH HORIZONTAL OUTLET

	Model: (USA & Canada)	Model: (International)	Pipe Size:	Dimensions				
				Width	Length	Start Ht	Depth	Outlet
Maxi: 1-3/16" SLOT DRAIN	SdH1-(Length)-2	S70-W200-60/H1	2"	2-3/4" [70]	Specify	3-1/8" [80]	Varies	3-3/8" [85]
	SdH1-(Length)-3	S70-W200-89/H1	3"	2-3/4" [70]	Specify	3-1/8" [80]	Varies	4-1/2" [114]
	SdH1-(Length)-4	S70-W200-114/H1	4"	2-3/4" [70]	Specify	3-1/8" [80]	Varies	6-5/16" [160]
	SdH1-(Length)-6	S70-W200-168/H1	6"	2-3/4" [70]	Specify	3-1/8" [80]	Varies	6-5/16" [160]



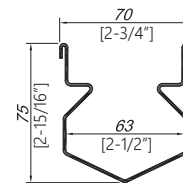
SaV1: 2-3/4" PRE-SLOPED STAINLESS STEEL SLOT DRAIN WITH VERTICAL OUTLET

	Model: (USA & Canada)	Model: (International)	Pipe Size:	Dimensions				
				Width	Length	Start Ht	Depth	Outlet
2-3/4" SLOT DRAIN	SaV1-(Length)-2	S70-W200-60/H1	2"	2-3/4" [70]	Specify	2-15/16" [75]	Varies	2-3/8" [60]
	SaV1-(Length)-3	S70-W200-89/H1	3"	2-3/4" [70]	Specify	2-15/16" [75]	Varies	3-3/8" [85]
	SaV1-(Length)-4	S70-W200-114/H1	4"	2-3/4" [70]	Specify	2-15/16" [75]	Varies	4-1/2" [114]
	SaV1-(Length)-6	S70-W200-168/H1	6"	2-3/4" [70]	Specify	2-15/16" [75]	Varies	6-5/8" [168]



SaH1: 2-3/4" PRE-SLOPED STAINLESS STEEL SLOT DRAIN WITH HORIZONTAL OUTLET

	Model: (USA & Canada)	Model: (International)	Pipe Size:	Dimensions				
				Width	Length	Start Ht	Depth	Outlet
2-3/4" SLOT DRAIN	SaH1-(Length)-2	S70-W200-60/H1	2"	2-3/4" [70]	Specify	2-15/16" [75]	Varies	2-3/8" [60]
	SaH1-(Length)-3	S70-W200-89/H1	3"	2-3/4" [70]	Specify	2-15/16" [75]	Varies	3-3/8" [85]
	SaH1-(Length)-4	S70-W200-114/H1	4"	2-3/4" [70]	Specify	2-15/16" [75]	Varies	4-1/2" [114]
	SaH1-(Length)-6	S70-W200-168/H1	6"	2-3/4" [70]	Specify	2-15/16" [75]	Varies	6-5/8" [168]



TOP SLOT DRAINS

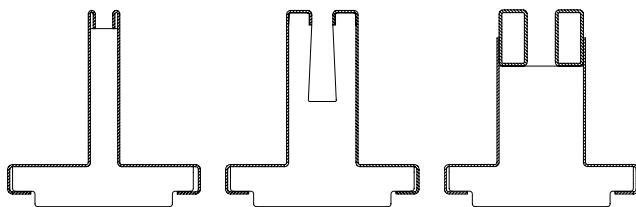
GENERAL INFORMATION

The top slot channels system is safe and resistant to unwanted vandalism, making it suitable for use in all public places.

The solution is great for use with building facades and surfaces adapted to pedestrian traffic. The slot is narrow, so it does not pose a threat to passers-by. Our standard design corresponds to load class A15.

APPLICATION

- commercial developments
- public areas
- car parks
- pedestrian zones
- residential areas
- landscaping



FINE

SMART

SQUARE



ADVANTAGES

- enforced top of the slot
- complete product line
- top slot gratings and revision boxes are easy for cleaning and maintenance
- easy installation
- installation possible with any paving material
- fast removal of surface water
- works with all types of pavement furnishing materials
- aesthetic look and durability
- parameters can be adjusted to the Clients requirements

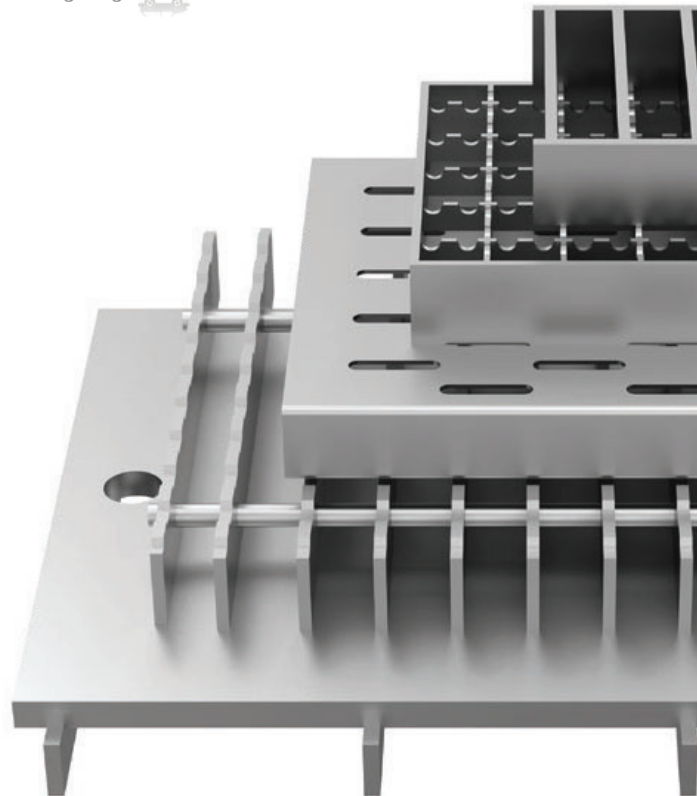
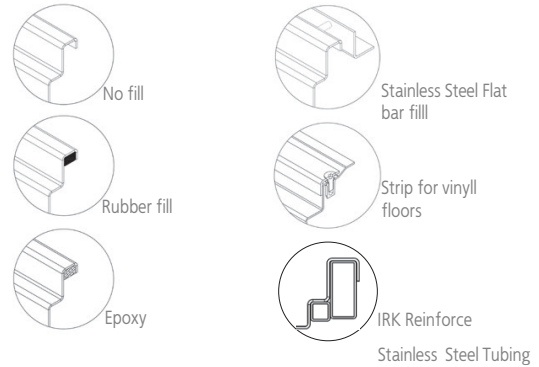
TRENCH, KITCHEN , & SLOT DRAIN GRATING & ACCESSORIES

Edge ID:	Edge Profile Reinforcement
BNK	No Fill
RBR	Rubber Fill
EPY	Epoxy Fill (Standard for all fill edged channels)
BAR	Stainless Steel Flat Bar Fill
EXL	Expansion Joint Angle
SVY	Vinyl Floor Clamp Strip
IRK	Reinforced Stainless Steel Tubing
TIL	1" Extended Tile Flange

Grate ID:	Grating Description
B	Perforated Sheet Grating - (Load Class-A)
K	Anti-Slip Mesh Grating - (Load Class-A)
D	Ladder Grating - (Load Class-B)
E	Anti-Slip Ladder Grating - (Load Class-B)
P	1/2" thick Solid Plate w/ Perimeter Slots - (Load Class-C)
Pp	1/2" thick Perforated Solid Plate - (Load Class-C)

****Load Class-D and above are available upon request in grating style "P" and "Pp"; these are also available in checker diamond plate.**

Item ID:	Accessories Description
FB	Filter Basket
SB	Sediment Basket
DBS	Dome Bottom Strainer
VPG	Grate locking w/Vandal Proof Screws
HIG	Detactable Hinge Grate
FC	Flange and Clamp (Priced per linear foot)
OTL	Offset outlet _____" from outside edge of channel
DOL	Dowel Offset outlet R _____" from right edge & L _____" from left edge
EXB	Cleanout Extention Box - _____" x _____" size i.e.(8"x8")
TP	1/2" NPT Trap Primer Connection
XT	Removable Trap (<i>*Refer to local code for acceptance</i>)
S10	Schedule 10 Outlet
S40	Schedule 40 Outlet
316L	Type AISI316L Stainless Steel

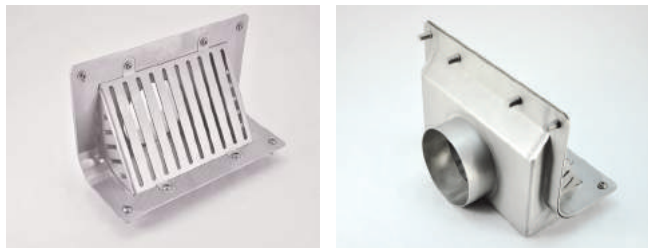


ROOF DRAIN

PARAPET DRAIN

Convex Shape Stainless Steel Through Wall Parapet Drain and PARAPET DRAIN WITH-Concave Shape Stainless Steel Through Wall Parapet Drain come in a variety of sizes. Stainless steel dome strainer included. Drains are equipped with flange and clamping bolts. Different types of outlet diameters 2" [60mm], 3" [89mm], 4" [114mm], 6" [168mm], 8" [219mm], & 12" [324mm]. Available material AISI304 and AISI 316L.

PARAPET DRAIN CONVEX

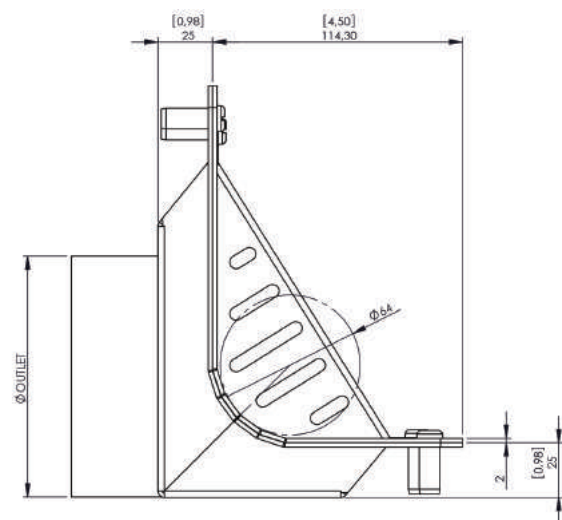
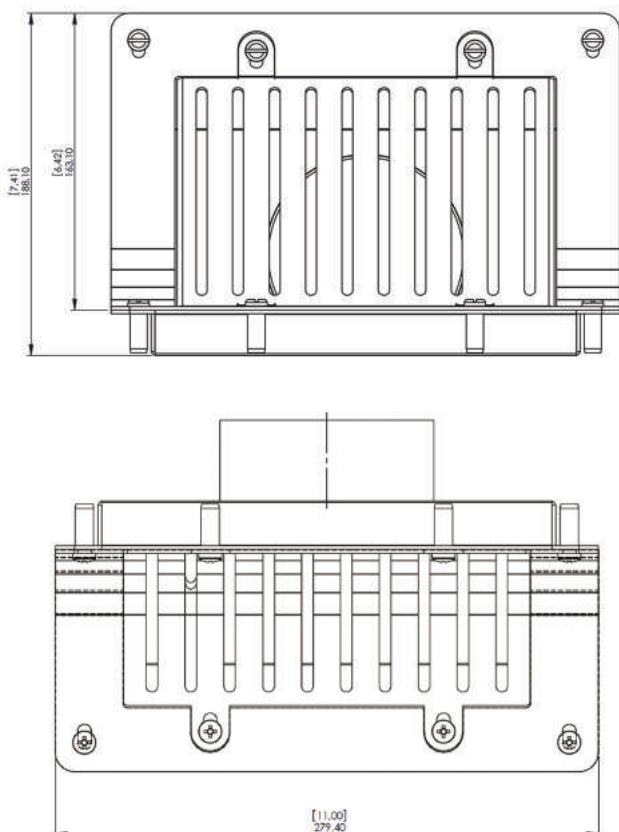


MODEL No	DEPTH[mm]	WIDTH[mm]	HEIGHT[mm]	OUTLET[mm]
PD200/060H-CX	4-1/2" [115]	11" [280]	6-7/16" [163]	2-3/8" [60]
PD200/089H-CX	4-1/2" [115]	11" [280]	6-7/16" [163]	3-1/2" [89]
PD200/114H-CX	4-1/2" [115]	11" [280]	6-7/16" [163]	4-1/2" [110]
PD500/168H-CX	9-7/16" [240]	28-3/4" [730]	16-1/4" [412]	6-5/8" [168]
PD500/219H-CX	9-7/16" [240]	28-3/4" [730]	16-1/4" [412]	8-5/8" [219]
PD500/324H-CX	9-7/16" [240]	28-3/4" [730]	16-1/4" [412]	12-3/4" [324]

PARAPET DRAIN CONCAVE



MODEL No	DEPTH[mm]	WIDTH[mm]	HEIGHT[mm]	OUTLET[mm]
PD200/060H-CV	4-1/2" [115]	11" [280]	6-7/16" [163]	2-3/8" [60]
PD200/089H-CV	4-1/2" [115]	11" [280]	6-7/16" [163]	3-1/2" [89]
PD200/114H-CV	4-1/2" [115]	11" [280]	6-7/16" [163]	4-1/2" [110]

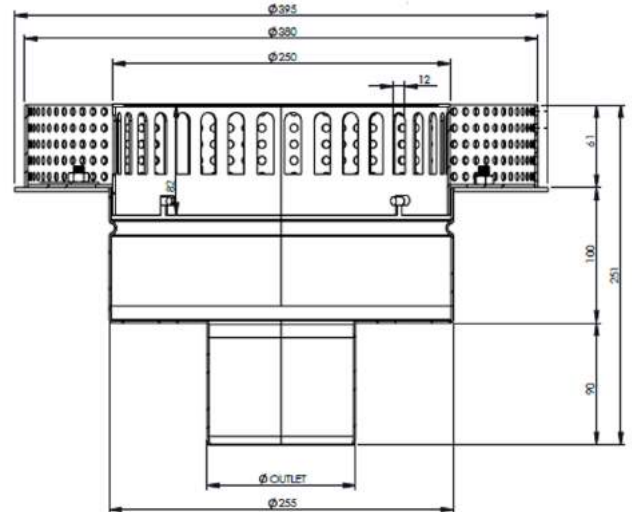


ROOF DRAIN

ROOF DRAIN STANDARD

with anchor flange, stainless steel waterproofing membrane clamp ring with screwed gravel stop, adjustable stainless steel extension flange, underdeck clamp and standard self-locking stainless steel dome strainer.

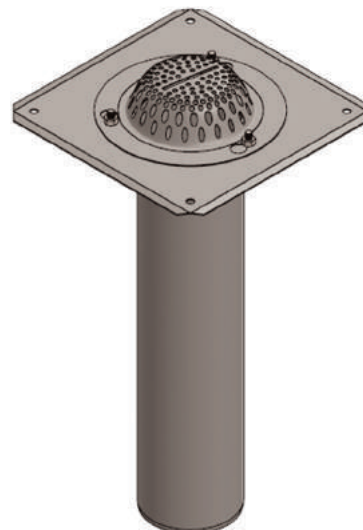
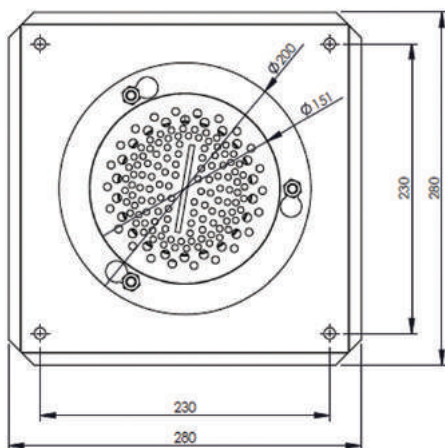
Used in any type of flat roofs and gutters. Dome provides for efficient drainage of rainwater and prevents debris from entering the drain line. Adjustable extension system can be adjusted to the thickness of insulation on top of the roof deck without the need for gaskets. Anchor flange and membrane clamp in groove design provides for secure grip of membrane and roof flashing materials.



MODEL No	DEPTH[mm]	WIDTH[mm]	HEIGHT[mm]	OUTLET[mm]
RD255/060V1	4" [100]	15-9/16" [395]	2-3/8" [61]	2-3/8" [60]
RD255/089V1	4" [100]	15-9/16" [395]	2-3/8" [61]	3-1/2" [89]
RD255/114V1	4" [100]	15-9/16" [395]	2-3/8" [61]	4-1/2" [114]

ROOF DRAIN DOME TYPE

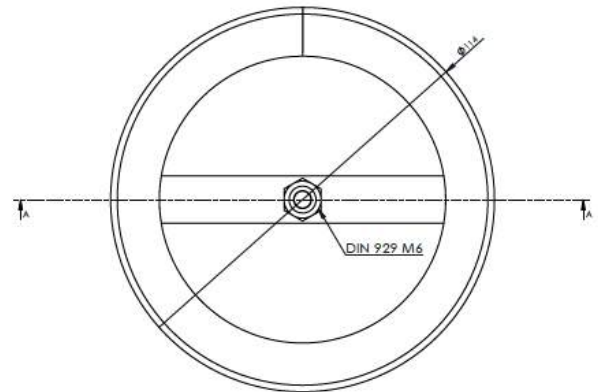
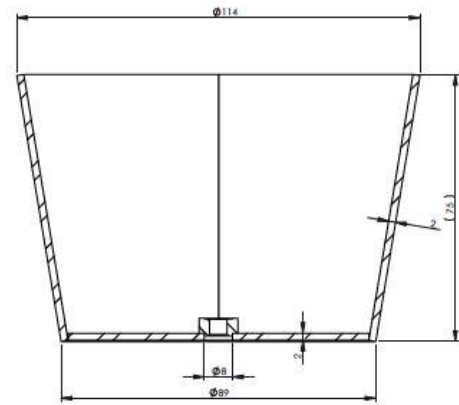
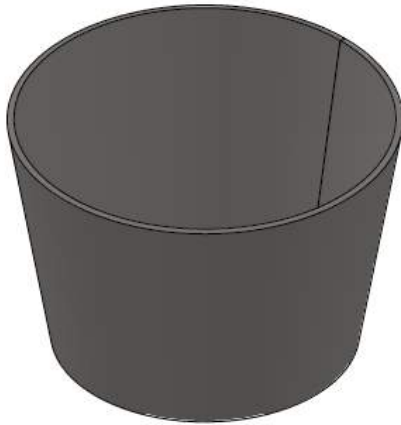
with anchor stainless steel upper plate flange with fourscrews, stainless steel dome strainer and long pipe outlet.



MODEL No	DEPTH[mm]	WIDTH[mm]	HEIGHT[mm]	OUTLET[mm]
RD-DT/114V1	11" [280]	11" [280]	21-7/16" [545]	4-1/2" [114]

ROOF DRAIN

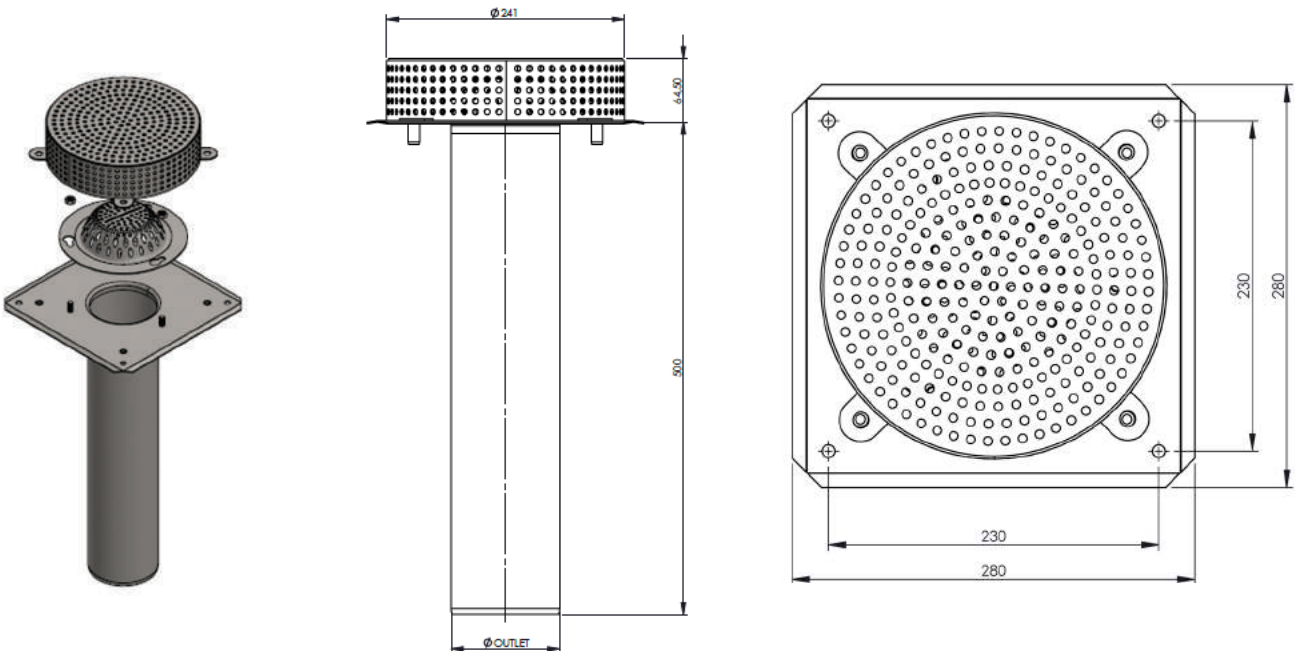
FUNNEL



MODEL No	WIDTH[mm]	HEIGHT[mm]	ASSEMBLY
FN-90/115/75_M6	3-1/2" 4-1/2" [89 114]	2-7/8" [75]	M6

PLANTER DRAIN

stainless steel drain used in plaza or planter areas of green roof systems.



MODEL No	DEPTH[mm]	WIDTH[mm]	HEIGHT[mm]	OUTLET[mm]
PLD300/060V1	11" [280]	11" [280]	22-1/4" [565]	2-3/8" [60]
PLD300/089V1	11" [280]	11" [280]	22-1/4" [565]	3-1/2" [89]
PLD300/114V1	11" [280]	11" [280]	22-1/4" [565]	4-1/2" [114]

SHOWER DRAINS

DUFB: Linear Floor Drain

A two-piece low profile linear floor drain system specifically designed for easy installation and bonded waterproofing membrane. DUFB Linear Drain is designed to accommodate large, small format tiles or stone installations in a shower with a single plane slope to the drain. The DUFB linear drain are designed for commercial or residential projects and is intended for interior and exterior applications.



WW: WedgeWire



SPG: Square Perforated



EPG: Earth Perforated



BAR: Solid Bar



TIL: Tile-In Tray



WPG: Weave Perforated

Model Selection: (Model ID)-(Grate Style)-(Length)-(Finish)

Example: DUFB-WW-35-BSS

Available Sizes:

- 29: 29" [736.6mm]
- 31: 31" [787.4mm]
- 33: 33" [838.2mm]
- 35: 35" [889.0mm]
- 39: 39" [990.6mm]
- 41: 41" [1041.4mm]
- 43: 43" [1092.2mm]
- 47: 47" [1193.8mm]
- 53: 53" [1346.2mm]
- 59: 59" [1498.6mm]
- 65: 65" [1651.0mm]
- 71: 71" [1803.4mm]
- Custom length

Finish:

- PSS:** Polished Stainless Steel (All except TIL)
- BSS:** Brushed Stainless Steel
- BP:** Black Powder Coated (All except TIL)

DUW: Wall Recessed Linear Drain

DUW Series is a one of a kind wall recessed linear drain, that is a two-piece low profile floor drain system specifically designed for a truly invisible floor drain that is an easy installation and bonded waterproofing membrane. DUW Linear Drain is designed to accommodate large, small format tiles or stone installations in a shower with a single plane slope to the drain. The DUW linear drain is designed for commercial or residential projects and is intended for interior applications.



DUW- (FLANGLSS)

~Ideal for application where drain end is located near a curb or curbless zero entry shower



DUWR - (SIDEWALL FLANGE)

~Ideal for application where drain ends are located between two walls



Model Selection: (Model ID)-(Body Depth)-(Length)-(Finish)

Example: DUW-T-35-BSS

Available Sizes:

- 12: 12" [304.8mm]
- 29: 29" [736.6mm]
- 31: 31" [787.4mm]
- 33: 33" [838.2mm]
- 35: 35" [889.0mm]
- 39: 39" [990.6mm]
- 41: 41" [1041.4mm]
- 43: 43" [1092.2mm]
- 47: 47" [1193.8mm]
- 53: 53" [1346.2mm]
- 59: 59" [1498.6mm]
- 65: 65" [1651.0mm]
- 71: 71" [1803.4mm]
- Custom length

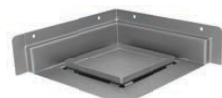
Body Depth:

- S:** - Finish floor SLAB thickness of (1/2" to 3/4")
- T:** - Finish floor TILE thickness of (1/8" TO 3/8")

DUFT: Neoangle Wall mounted Corner Drains

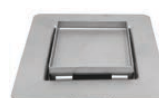


DUFT-T9: Triangle Tile-In Tray



DUFT-S6: Square Tile-In Tray

DUFC: Center Drains



DUFC-BS-(SIZE): Square Tile-In Center Drain

Available Sizes:

- 4: 4"x4" [101.6mm]
- 6: 6"x6" [152.4mm]
- 8: 8"x8" [203.2mm]

MANHOLE COVERS



Manhole covers are available in various options and sizes. They are widely used in industrial and public facilities, i.e. in shops, exhibition halls, restaurants, workshops, warehouses, and other places where access to underfloor installations is required.

Floor tiles, terracotta or other materials can be used as finishing material of the upper part of a manhole covers.

Manhole covers are made of 3 [mm] thick stainless steel sheet of AISI 304 or AISI 316. This material allows applying products in places with strict hygienic requirements.

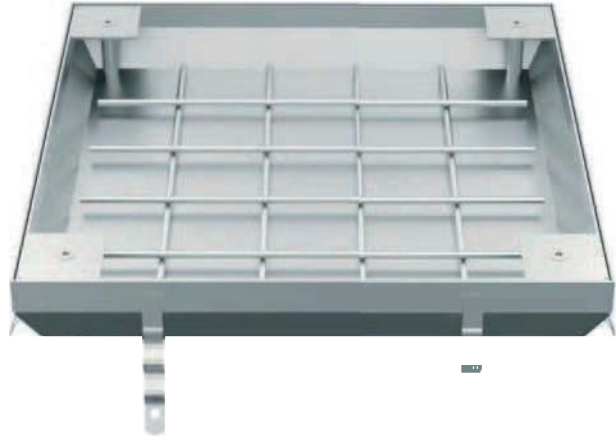
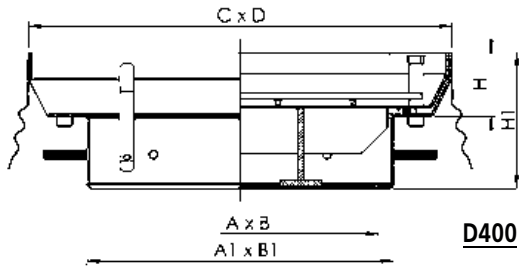
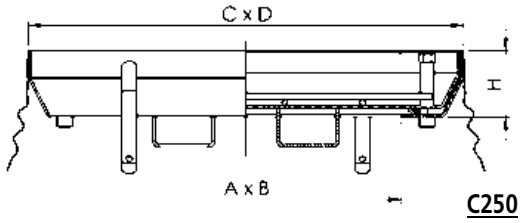
Manhole covers consist of upper and lower parts bolted

to ensure safe closure. The product reinforcement is made of "black steel". An O-ring seal between the lower and upper parts is applied.

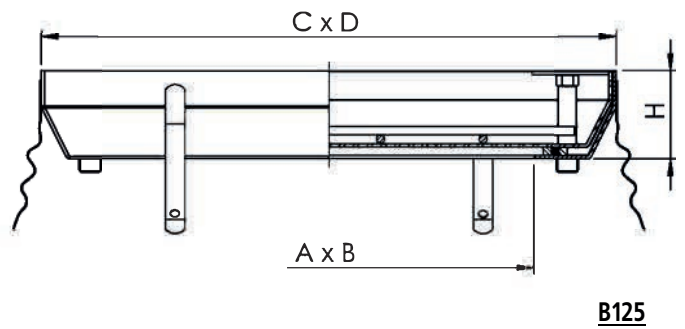
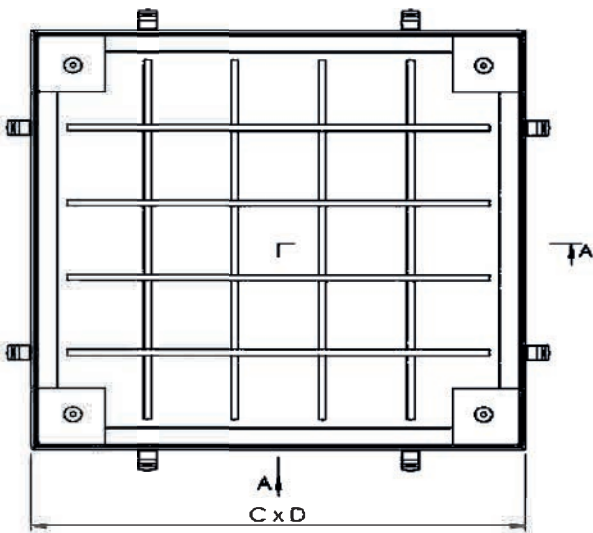
ADVANTAGES OF MANHOLE COVERS

- easy access to underfloor installations,
- isolation against odors,
- waterproof,
- simple opening system,
- high durability,
- aesthetically appealing.

MANHOLE COVERS



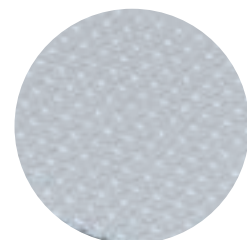
DIMENSIONS OF GAS-TIGHT MANHOLE COVERS



The set includes: 2x round handle



Option: checker plate



Class	MODEL No.	A x B [mm]	C x D [mm]	H [mm]	A x B [In]	C x D [in]	H [in]
B125 C250 D400	(Class)-K3x3	300x300	440x440	70	12"x12"	17-3/8"x17-3/8"	2-3/4"
	(Class)-K4x4	400x400	560x560	85	15-3/4"x15-3/4"	22"x22"	3-3/8"
	(Class)-K5x5	500x500	660x660	85	19-5/8"x19-5/8"	26"x26"	3-3/8"
	(Class)-K6x6	600x600	760x760	85	23-5/8"x23-5/8"	29-7/8"x29-7/8"	3-3/8"
	(Class)-K7x7	700x700	880x880	100	27-1/2"x27-1/2"	34-5/8"x34-5/8"	3-7/8"
	(Class)-K8x8	800x800	980x980	100	31-1/2"x31-1/2"	38-5/8"x38-5/8"	3-7/8"
	(Class)-K9x9	900x900	1080x1080	100	35-1/2"x35-1/2"	42-1/2"x42-1/2"	3-7/8"
	(Class)-K10x10	1000x1000	1180x1180	100	39-3/8"x39-3/8"	46-1/2"x46-1/2"	3-7/8"

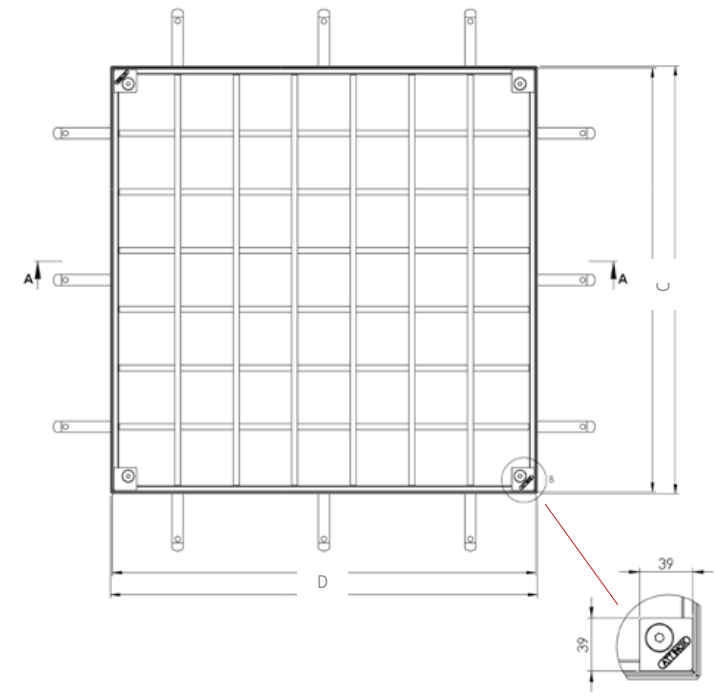
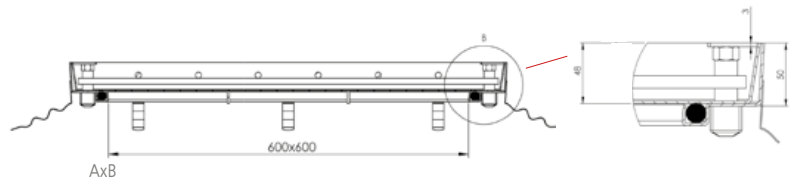
MANHOLE COVERS

MODEL No.	Height [mm]	External CxD dimensions [mm]	Internal AxB dimensions [mm]
K3x3	2" [50]	17"x17" [430x430]	11-13/16"x11-13/16" [300x300]
K4x4	2" [50]	20-7/8"x20-7/8" [530x530]	15-3/4"x15-3/4" [400x400]
K4x6	2" [50]	20-7/8"x28-3/4" [530x730]	15-3/4"x23-5/8" [400x600]
K5x5	2" [50]	24-7/8"x24-7/8" [630x630]	19-11/16"x19-11/16" [500x500]
K5x7	2" [50]	24-7/8"x24-7/8" [630x830]	19-11/16"x27-1/2" [500x700]
K6x6	2" [50]	28-3/4"x28-3/4" [730x730]	23-5/8"x23-5/8" [600x600]
K6x8	2" [50]	24-7/8"x36-5/8" [630x930]	23-5/8"x31-1/2" [600x800]
K7x7	2" [50]	24-7/8"x24-7/8" [830x830]	27-1/2"x27-1/2" [700x700]
K8x8	2" [50]	36-5/8"x36-5/8" [930x930]	31-1/2"x31-1/2" [800x800]
K9x9	2" [50]	40-1/2"x40-1/2" [1030x1030]	35-7/16"x35-7/16" [900x900]
K10x10	2" [50]	44-1/2"x44-1/2" [1130x1130]	39-3/8"x39-3/8" [1000x1000]

A15 CLASS MANHOLE COVERS

Standard gas-tight manholes consist of an upper and a lower part, a screw fastening ensuring a secure and stable closure and reinforcement made of „black steel“. They are equipped with an O-ring seal between two parts of the hatch.

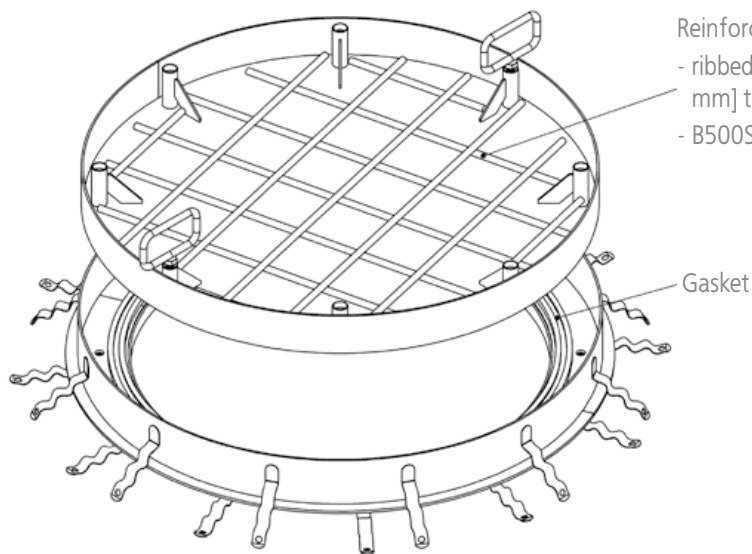
- easy access to underfloor installations
- insulation against odors
- waterproof,
- simple opening system
- high durability
- aesthetics



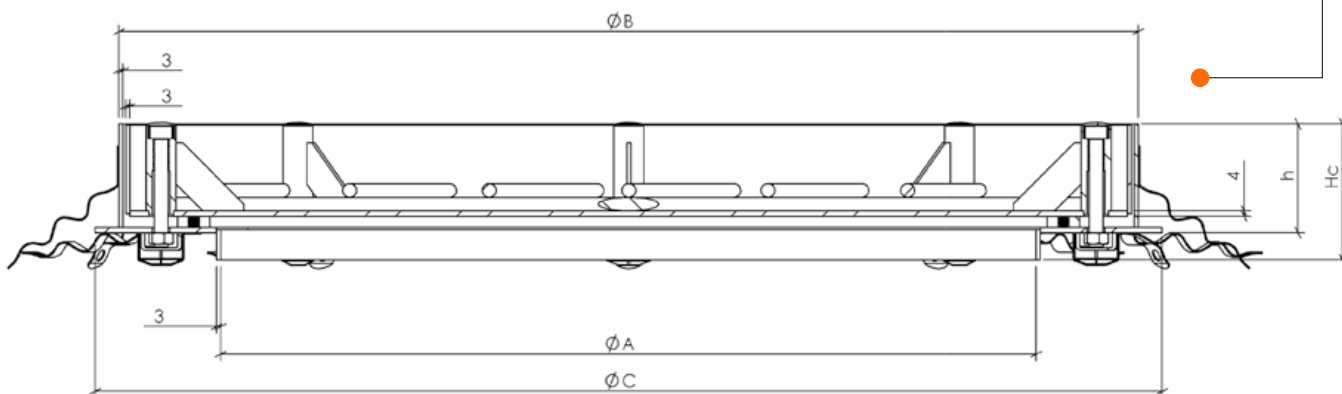
MANHOLE COVERS

ROUND MANHOLE COVE

ATT's range of products is complemented by round manhole covers. They are manufactured in two versions: for filling or with a stainless checker plate. The engineering department adapts the dimensions and structures resulting from the expected load class as per individual specifications of the client.

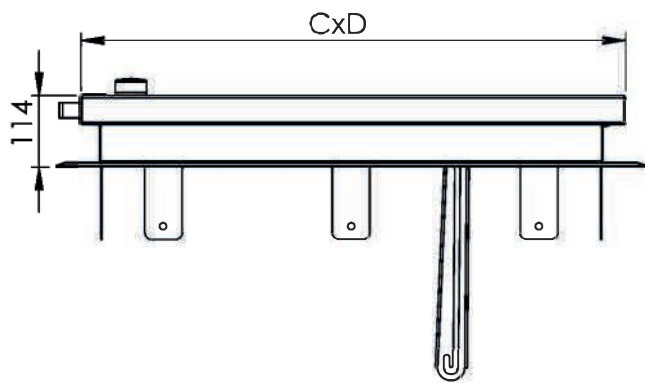
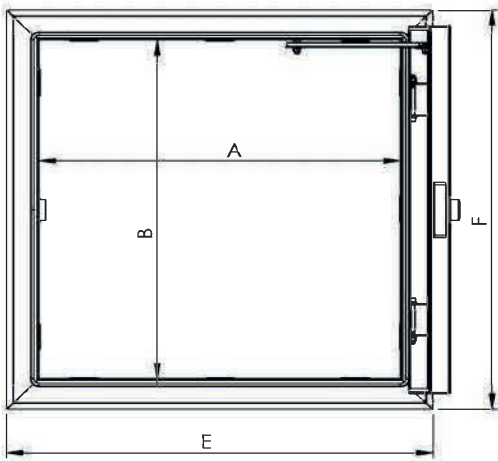


MODEL No.	Class A15				Class B125				Class C250				Class D400			
	A [mm]	B [mm]	C [mm]	h [mm]	Hc [mm]	h [mm]	Hc [mm]	h [mm]	Hc [mm]	h [mm]	Hc [mm]	h [mm]	Hc [mm]	h [mm]	Hc [mm]	
D600	23-5/8" [600]	29-1/2" [750]	30-7/8" [785]	2-3/8" [60]	2-3/8" [80]	2-3/8" [80]	3-7/8" [100]	3-7/8" [100]	5-7/8" [150]	3-7/8" [100]	7-7/8" [200]	3-7/8" [100]	7-7/8" [200]	3-7/8" [100]	7-7/8" [200]	
D700	27-1/2" [700]	33-7/16" [850]	34-13/16" [885]	2-3/8" [60]	2-3/8" [80]	2-3/8" [80]	3-7/8" [100]	3-7/8" [100]	5-7/8" [150]	3-7/8" [100]	7-7/8" [200]	3-7/8" [100]	7-7/8" [200]	3-7/8" [100]	7-7/8" [200]	
D800	31-1/2" [800]	37-3/8" [950]	38-3/4" [985]	2-3/8" [60]	2-3/8" [80]	2-3/8" [80]	3-7/8" [100]	3-7/8" [100]	5-7/8" [150]	3-7/8" [100]	7-7/8" [200]	3-7/8" [100]	7-7/8" [200]	3-7/8" [100]	7-7/8" [200]	
D900	35-7/16" [900]	41-5/16" [1050]	42-3/4" [1085]	2-3/8" [60]	2-3/8" [80]	2-3/8" [80]	3-7/8" [100]	3-7/8" [100]	5-7/8" [150]	3-7/8" [100]	7-7/8" [200]	3-7/8" [100]	7-7/8" [200]	3-7/8" [100]	7-7/8" [200]	
D1000	9-3/8" [1000]	45-1/4" [1150]	46-5/8" [1185]	2-3/8" [60]	2-3/8" [80]	2-3/8" [80]	3-7/8" [100]	3-7/8" [100]	5-7/8" [150]	3-7/8" [100]	7-7/8" [200]	3-7/8" [100]	7-7/8" [200]	3-7/8" [100]	7-7/8" [200]	

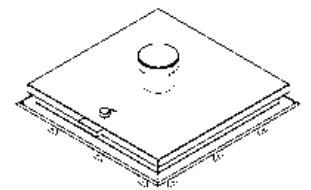


ACCESS COVERS

ACCESS COVER DIMENSIONS

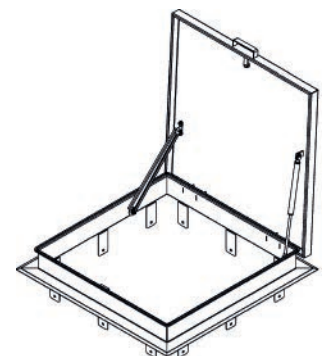
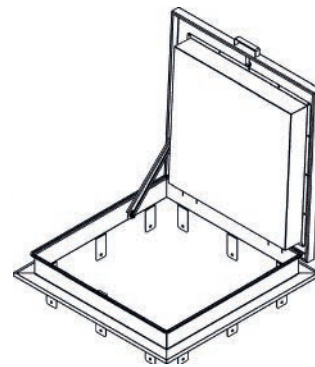


Access cover options:



with protective grid

with a ventilation cup



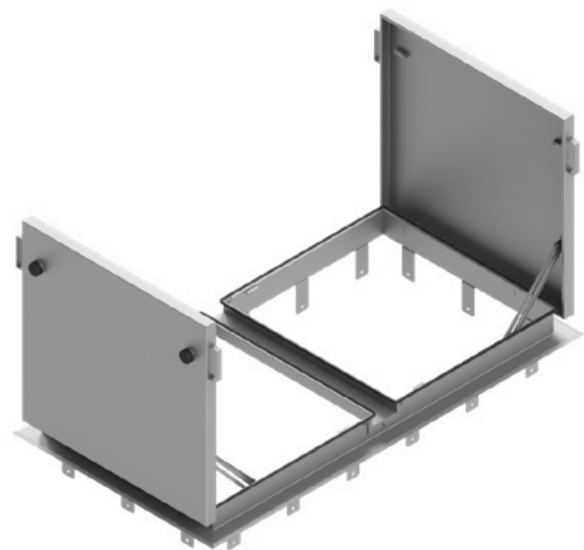
with insulation

with gas lifters (the number of pieces depends on the size of the access cover)

MODEL No.	A x B [mm]	C x D [mm]	E x F [mm]	A x B [in]	C x D [in]	E x F [in]
WB-14x4	400 x 400	470 x 470	543 x 543	15-3/4"x15-3/4"	18-1/2"x18-1/2"	21-3/8"x21-3/8"
WB-15x5	500 x 500	570 x 570	643 x 643	19-5/8"x19-5/8"	22-1/2"x22-1/2"	25-3/8"x25-3/8"
WB-16x6	600 x 600	670 x 670	743 x 743	23-5/8"x23-5/8"	26-3/8"x26-3/8"	29-1/4"x29-1/4"
WB-17x7	700 x 700	770 x 770	843 x 843	27-1/2"x27-1/2"	30-3/8"x30-3/8"	33-1/4"x33-1/4"
WB-18x8	800 x 800	870 x 870	943 x 943	31-1/2"x31-1/2"	34-1/4"x34-1/4"	37-1/8"x37-1/8"
WB-19x9	900 x 900	970 x 970	1043 x 1043	35-1/2"x35-1/2"	38-1/4"x38-1/4"	41"x41"
WB-110x10	1000 x 1000	1070 x 1070	1143 x 1143	39-3/8"x39-3/8"	42-1/8"x42-1/8"	45"x45"

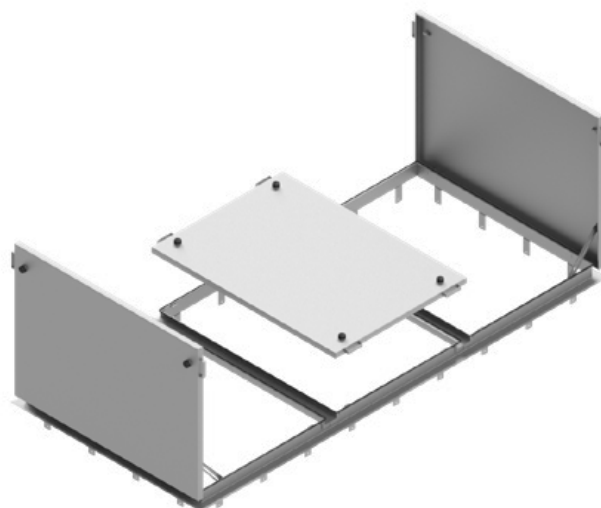
ACCESS COVERS

2-PART ACCESS COVERS



MODEL No.	A x B [mm]	C x D [mm]	E x F [mm]
WB-2 6x12	23-5/8"x47-1/4" [600 x 1200]	24-5/8"x27" [626x684]	29-1/4"x52-7/8" [743x1343]
WB-2 8x16	31-1/2"x63" [800 x 1600]	32-1/2"x34-3/4" [826x884]	37-1/8"x68-5/8" [943x1743]

3-PART ACCESS COVERS



MODEL No.	A x B [mm]	C x D [mm]	E x F [mm]
WB-3 6x18	23-5/8"x70-7/8" [600 x 1800]	19-7/8"x27" [505x684]	29-1/4"x76-1/2" [743x1943]
WB-3 8x24	31-1/2"x94-1/2" [800 x 2400]	31-3/4"x34-3/4" [805x884]	37-1/8"x100-1/8" [943x2543]

BOLLARDS AND BARRIERS

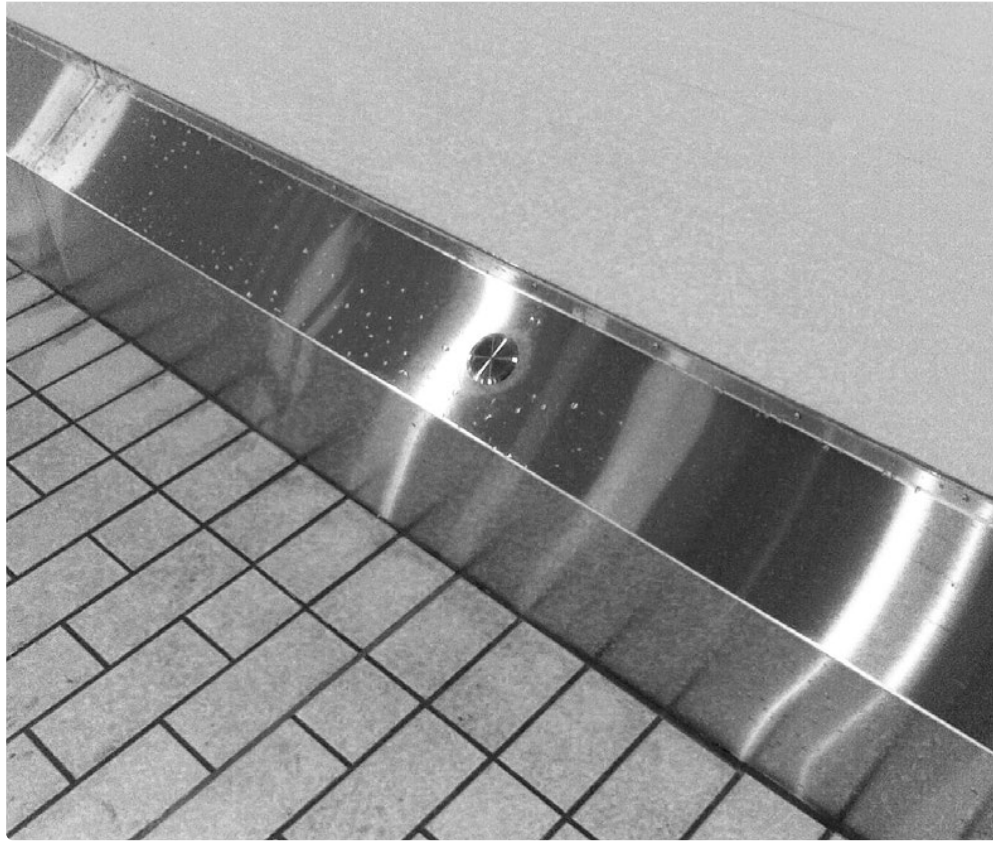


Protective elements are used e.g. in food industry plants (breweries, dairies, abattoirs), in catering facilities and hospitals. The shape, diameter of pipes, height of buffers and mechanical resistance parameters are designed in accordance with the individual expectations of a client. By standard, 14GA to 11gas [1.5mm to 3mm] thick pipes are used. We offer surfaces with 2B finish or brushed. There are 2 types of buffer installation: 1) in holes in the floor which are filled with concrete; 2) by chemical or expansion anchors, that attach the flange of the buffer to the floor.

The complete unit constitutes a durable and hygienic element that provides protection for walls, sliding doors and other objects and enables effective cleaning of the protected area. Non-corrosive stainless steel is a significant advantage for bollards and barriers in the event of mechanical damage. Upon impact, the product is only deformed and it retains its hygienic characteristics.



CURBS



STAINLESS STEEL CURBS

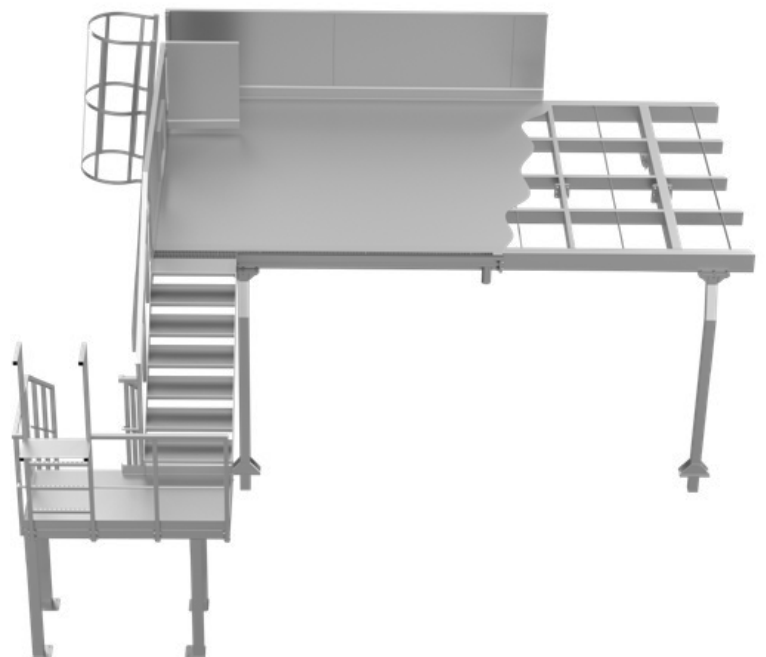
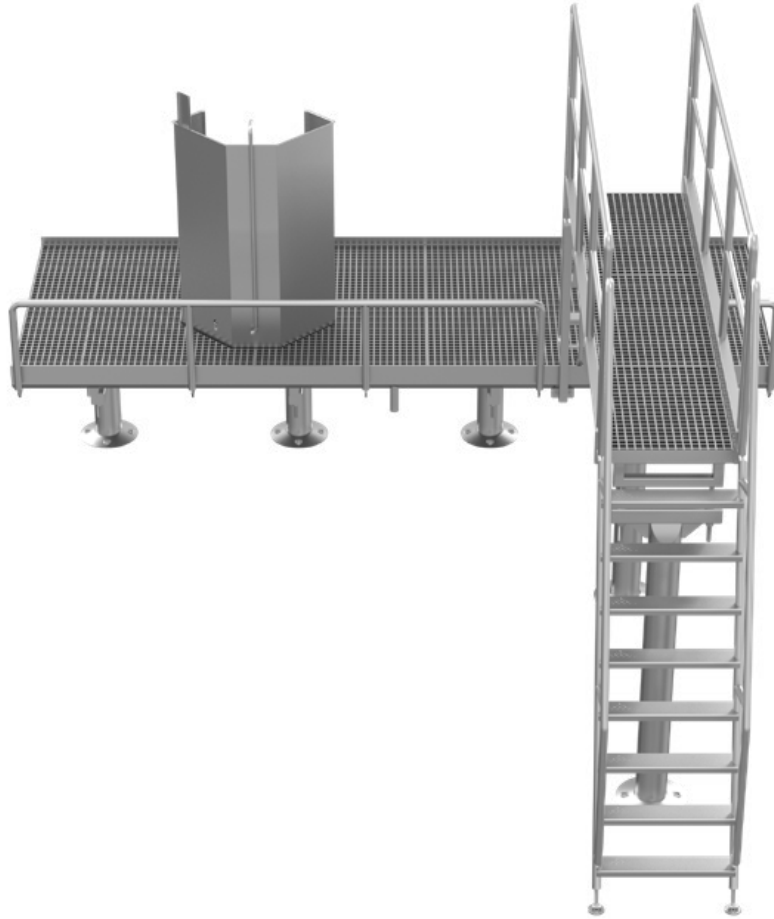
Food production, chemical and pharmaceutical plants require adherence to particularly strict hygiene requirements. These include covering contact places between a floor and a wall, as well as walls and a ceiling, where dirt and moisture may accumulate, thus creating conditions contributing to the growth of bacteria.

Stainless steel CURBS are an excellent and functional solution to avoid the problem of bacterial contamination and dirt accumulation. The product is designed to fit to wall panels as well as concrete structures to effectively protect these surfaces. ATT's product line of CURBS is supplemented by finishing elements such as internal and external corners. At the connection between CURBS and the floor, appropriate sealing substances, resistant to strong disinfecting agents and high temperatures, are used.

The product range includes both CURBS that tightly adhere to the panels and those filled with concrete and then closed with special covers.



PLATFORMS AND STRUCTURES





Technological platforms are elements of engineering structures that ensure safe access to a given industrial zone. Platforms are applied to eliminate hazards and ensure the safety of employees working at heights. Due to the customized shape of each platform, these constructions allow employees easy and safe access to specific working areas.

All platform structures are designed and manufactured in accordance with the following standards:

1. Safety of machinery – Permanent means of access to machinery – Part 1: Choice of fixed means of access between two levels: **PN-EN ISO 14122-1:2016-08.**

2. Safety of machinery – Permanent means of access to machinery – Part 2: Working platforms and walkways **PN-EN ISO 14122-2:2016-08.**

3. Safety of machinery – Permanent means of access to machinery – Part 3: Stairs, stepladders and railings: **PN-EN ISO 14122-3:2016-08.**

4. Safety of machinery – Permanent means of access to machinery – Part 4: Fixed ladders **PN-EN ISO 14122-4:2016-08.**

5. **PN-EN 1090-1:2012 Part 1:**

Rules of compliance assessment for constructional components

PN-EN 1090-2:2012 Part 2:

Technical requirements for steel structures



HYGIENIC TROLLEYS AND BINS

We offer wide range of processing trolleys for food industry type (Z and H) for transport smokehouses defrosting gastronomy with platforms trays sticks. The portfolio covers selection of eurobins meat processing tubs containers for meat transport baths.

EUROBINS

Catalogue number	Description	Dimensions [mm] [in]	
00.650012.01	capacity 31gal or 120l	580x580x595	22-7/8"x22-7/8"x23-1/2"
00.650020.01	capacity 52gal or 200l	680x690x700	26-3/4"x26-3/4"x27-1/2"
00.650030.01	capacity 79gal or 300l	680x690x950	26-3/4"x26-3/4"x27-1/2"
00.650020.02	capacity 52gal or 200l perforated	680x690x950	26-3/4"x26-3/4"x37-1/2"
00.650020.03	capacity 52gal or 200l with dripping lip	680x690x950	26-3/4"x26-3/4"x37-1/2"
00.650030.02	capacity 79gal or 300l with dripping lip	680x690x950	26-3/4"x26-3/4"x37-1/2"



Options stainless steel material 304/316 capacity 120l 31gal 200l 52gal 300l 79gal perforated walls/ bottom lids discharge valves dripping lips.

H-TYPE & Z-TYPE SMOKEHOUSE TROLLEY

Catalog number	Description	Dimensions [mm] [in]	
00.647010.01	6 shelves for a stick of 1000mm 39-3/8 length	1021x985x1970	40-3/8 x 38-3/4 x 77-1/2
00.647010.02	6 shelves for stick 1000 mm long and trays 920x948 mm	1021x985x1970	40-3/8 x 38-3/4 x 77-1/2

Trolleys are available in Z and H structure type for smoking sticks and trays. Options stainless steel material 304/316 shelves for sticks or sticks and trays customized no. of levels handles.



TRANSPORT CARTS

Catalogue number	Type of wheels	Dimensions [mm] [in]	
00.640004.01	plastic	410x655	16-1/4"x 25-3/4"
00.640004.02	rubber	410x655	16-1/4"x 25-3/4"



For Euro containers (400mmx600mm) 15-3/4"x23-5/8" 6 tilting wheels.

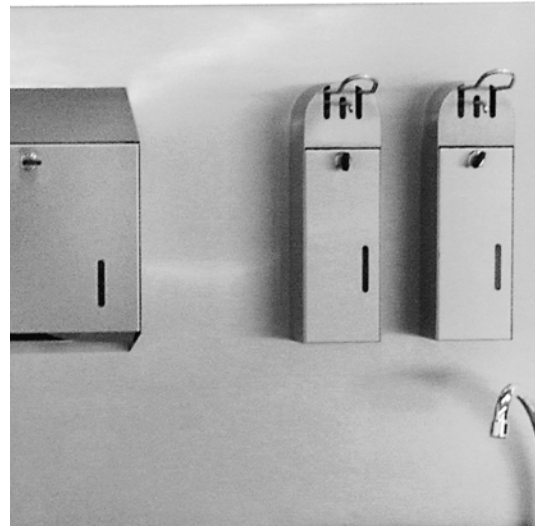
ALUMINIUM MANHOLE COVERS

SANITARY WALL UNIT

Catalogue number	Dimensions [mm]	Options
00.608009.01	37-3/8"x37-3/8" [950x950]	photo-cell-type
00.608009.02	37-3/8"x37-3/8" [950x950]	knee-type
00.608009.03	37-3/8"x37-3/8" [950x950]	with sterilizer (photo-cell washbasin)

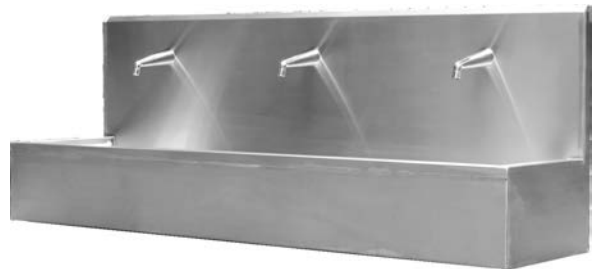
Sanitary wall unit consists of the following elements:

- washbasin with a switch - knee or sensor type,
- soap and disinfectant dispenser,
- paper dispenser,
- waste paper bin,
- wall protective screen.



WASHBASIN TROUGH WITH A KNEE SWITCH

Catalogue number	No. of stands	Dimensions [mm]
00.606013.01	2	51-1/8"x19-11/16"x28" [1300x500x710]
00.606019.01	3	74-7/8"x19-11/16"x28" [1900x500x710]
00.606025.01	4	98-7/8"x19-11/16"x28" [2500x500x710]



Optionally we offer soap, washing liquid and towel dispensers, as well as paper bins to our multistand wash-basin troughs.

MANUAL FOOTWEAR WASHER

Catalog number	Dimensions [mm]
00.690004.01	15-3/4"x20"x16-1/2" [400x510x420]

We offer wide range of shoe sole and footwear washers; manual, with sensor switch, with adjusted feet's height etc. according to the specific requirements.



INDUSTRIAL HYGIENE DISPENSER

The dispenser made of AISI 304 stainless steel meets the health and safety standards. Universal design allows usage in most hygienically demanding work environment. The dispenser can be adapted to surfaces such as: tables, shelves, cabinets or it may be combined with other products, such as: dispensers for paper tissues, disposable gloves and head cover nets.

GENERAL INFO

- Stainless steel disinfection pilla
- Material stainless steel AISI 304 (1.4301)
- Sheet thickness 14 GA [2 mm]
- Plastic pump
- Brushed surface
- 1 liter container



INDUSTRIAL HYGIENE DISPENSER

FEATURES

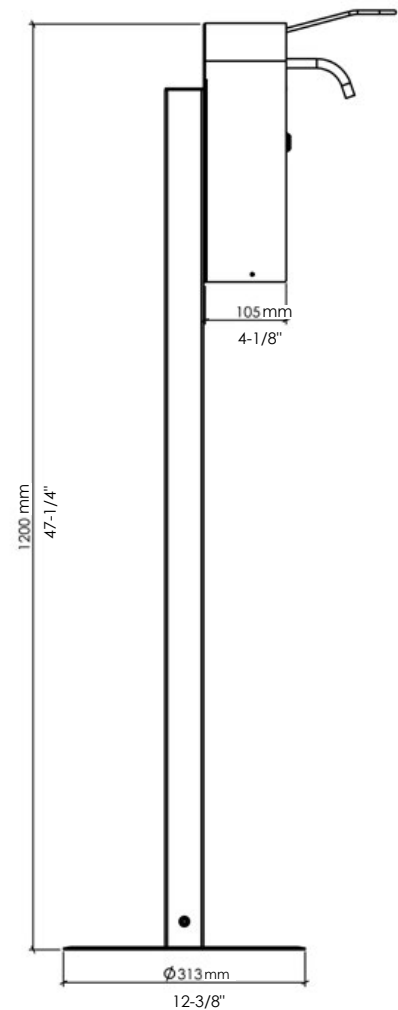
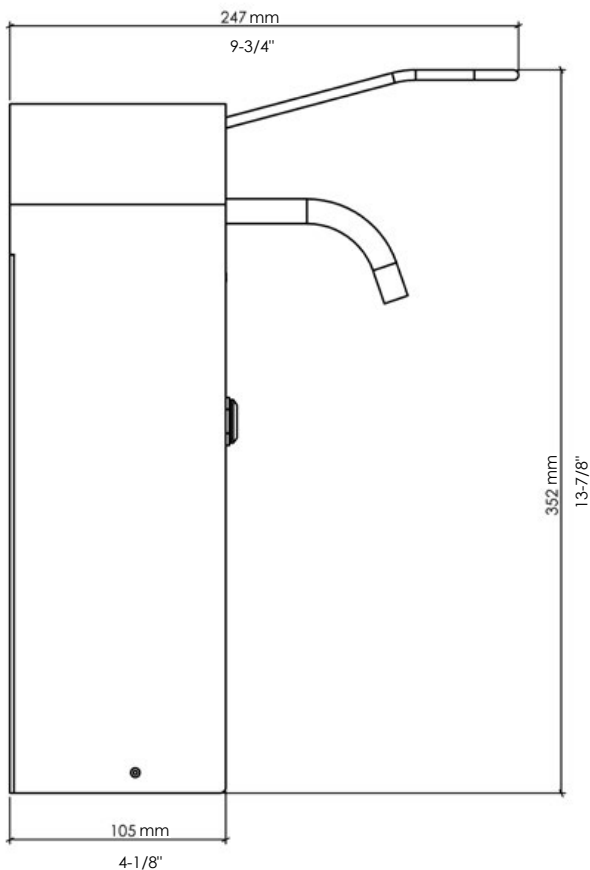
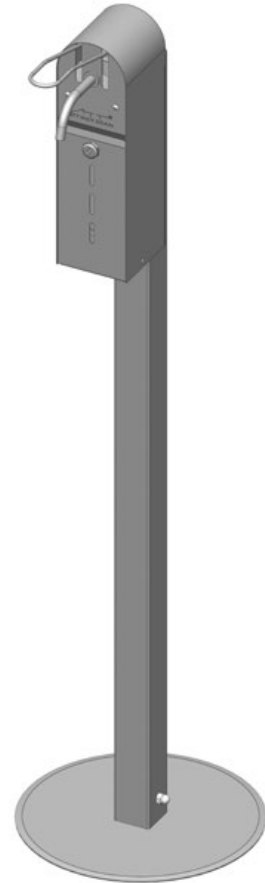
Our dispenser is a simple and effective solution that ensures maximum safety of hand hygiene in the workplace.

Adding disinfectant is simple and requires no additional tools.

The height of the product can be adjusted to customer needs.

CUSTOM PRODUCTS

We can also make custom products targeted only at your needs.



LAWN EDGING



Lawn edgings are made of stainless steel AISI 304. They are used as a flexible separation of green areas in parks and gardens.

CHARACTERISTIC

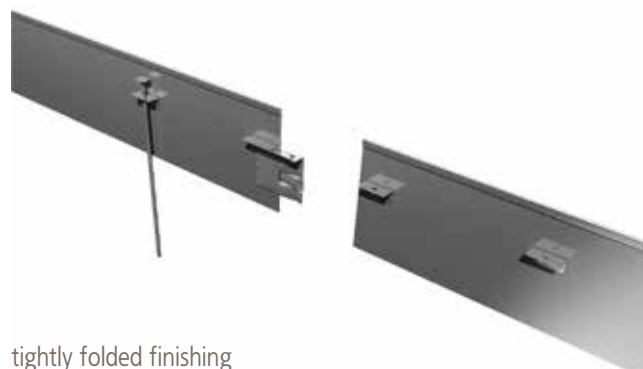
- Flexibility,
- Durability and resistance to fertilizers,
- Sharp or tightly folded edges,
- simple installation using stainless steel special profile pins,
- Standard height, wide scope of length.

STANDARD DIMENSIONS

- Production length: 19-11/16" [500mm], 39-3/8" [1000mm], 59" [1500mm], 79-3/8" [2000], 118-1/8" [3000mm]
- Width 6-7/8" [175 mm]
- Metal sheet thickness: 20GA [1mm]; 16GA [1.5 mm]

* There is possible to modify dimensions and the thickness of metal sheet according to individual Clients' requirements.

length [mm]	height [mm]	sheet thickness [mm]	catalogue number	
			sharp edges	tightly folded edges
19-11/16" [500]	6-7/8" [175]	20GA [1]	00.175005.01	01.175005.01
39-3/8" [1000]	6-7/8" [175]	20GA [1]	00.175010.01	01.175010.01
59" [1500]	6-7/8" [175]	20GA [1]	00.175015.01	01.175015.01
78-3/4" [2000]	6-7/8" [175]	20GA [1]	00.175020.01	01.175020.01
118-1/8" [3000]	6-7/8" [175]	20GA [1]	00.175030.01	01.175030.01
19-11/16" [500]	6-7/8" [175]	16GA [1.5]	00.175005.02	01.175005.02
39-3/8" [1000]	6-7/8" [175]	16GA [1.5]	00.175010.02	01.175010.02
59" [1500]	6-7/8" [175]	16GA [1.5]	00.175015.02	01.175015.02
78-3/4" [2000]	6-7/8" [175]	16GA [1.5]	00.175020.02	01.175020.02
118-1/8" [3000]	6-7/8" [175]	16GA [1.5]	00.175030.02	01.175030.02



tightly folded finishing

Please note that ATT & Drain Unlimited are continuously developing its portfolio of products in order to implement technology upgrades and meet legal code requirements. These companies thus reserves the right to modify products at any time without changing their general characteristics.

ATT



International

ATT Sp. z o. o.

16C Albatrosów St.
30-716 Kraków, Poland
tel: +48 12 290 29 30
fax: +48 12 290 29 31
e-mail: att@att.eu
www.attinox.eu

North America - USA & Canada

Drains Unlimited Inc.

110 Post Road
Darien, CT 06820, USA
tel: +1 (833) 837-2467
e-mail: sales@drains-unlimited.com
www.drains-unlimited.com


ATT INOX DRAIN[®]
Stainless Steel Engineering

In Association with
DRAINS
UNLIMITED 